



Ministry of Education, Sports and Culture

**EDUCATION
STATISTICAL DIGEST**

2010

SAMOA

Introduction

The Statistical Digest provides a range of statistics and performance measures related to school education in Samoa.

The information included in the digest is the latest information that is available as of May 2010. Historical data has also been included to reflect changes over time.

The Digest is divided into two parts:

- Part 1 – Data from School Census Information System
- Part 2 – Data from sources other than the School Census Information System

Part 1

Data from School Census Information System

The Annual School Census data collection held on 3rd March 2010, is a major source of statistical information. The census data is stored in the Ministry's school census information system called Manumea. The school census information system includes a series of reports, which can be automatically produced. These reports are contained in Part 1 of the Statistical Digest.

Part 2

Data from sources other than the School Census Information System

The Ministry of Education, Sports and Culture's performance measure framework includes a range of indicators that are not automatically produced from the School Census Information System. Data has been assembled from a range of sources such as examination results and personnel information. This information is contained in Part 2 of the Statistical Digest.

Statistical Digest produced by:
Policy, Planning and Research Division
Ministry of Education Sports & Culture
Samoa
Phone: 21911
Fax: 21917
Email: samoamesc@lesamoa.net

July 2010

Table of Contents for Part 1 – Data from School Census Information System

Number of schools by school type and district, 2010.....	1
Size of government schools by district, 2010.....	2
School enrolments by level, gender and status, 2010.....	3
School enrolments for all schools, 2001 – 2010.....	4
School enrolment for government schools, 2001 – 2010.....	4
Percentage enrolments in government schools, 2001 – 2010.....	5
Male school enrolments, all schools, 2001 – 2010.....	6
Percentage male enrolments, all schools, 2001 – 2010.....	6
School enrolments by district and maximum level provided, 2010.....	7
Number of repeaters by level in 2010.....	8
Repeaters in all schools by level, 2001 – 2010.....	8
Percentage of repeaters in all schools by level, 2001 – 2010.....	9
Transition rates by year level, 2001 – 2010.....	10
Drop out rates (percentage) by year level, 1995 – 2010.....	11
Number of teachers by school type and district, 2010.....	12
Student-Teacher ratio by school type and district, 2010.....	13
Student-Teacher ratio by level, government schools, 2001 - 2010.....	14
Number of student absent on Census day (3 rd March 2010).....	15
Number of government secondary schools teaching curriculum subjects by level.....	16
Primary school facilities by Controlling Authority, 2010.....	17
Secondary school facilities by Controlling Authority, 2010.....	17

Table of Contents for Part 2 – Data from sources other than School Census Information System

Average raw score at National Year 8 Examinations.....	1
Number of students sitting Year 8 Examinations.....	1
Percentage of Year 8 students that sat the Year 8 Examinations.....	1
Average raw score at National Year 12 Examinations.....	2
Number of students sitting National Year 12 Examinations.....	2
Primary students identified as at Risk, Year 4, All Schools (Government and Non-Government).....	3
Primary students identified as at Risk, Year 6, Government Schools.....	4
National Age Participation Rates.....	5
No. of Government schools that are meeting the national standards for primary student-teacher ratio of 1 teacher to 30 students (1:30).....	6
No. of Government schools that are meeting the national standards for secondary student-teacher ratio of 1 teacher to 20 students (1:20).....	6
Apparent Retention Rate for all schools.....	7
Students commencing first year of tertiary studies.....	7
Transition Rate from Year 13 to identified tertiary education.....	7

Definitions

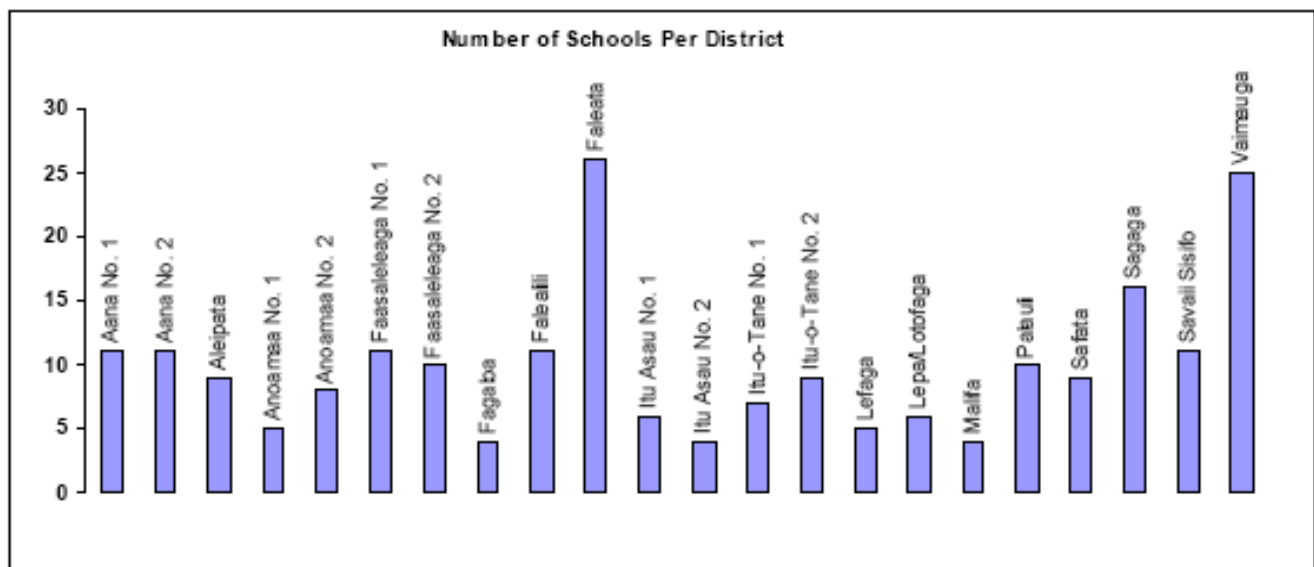
<i>Apparent Retention Rate</i>	compares the number of students in a given year with the size of the cohort. For example, the apparent retention rate of Years 9-12 for 2010 is calculated as the number of students in year 12 in 2010 divided by the number of students in year 9 in 2007.
<i>Completion Rates</i>	the percentage of students sitting the national exams is a measure of completion rates, e.g. percentage of students sitting year 8 exam is a measure of how many students starting year 8 actually complete year 8.
<i>Drop-out Rate</i>	The percentage of students who neither progressed from one level to the next or repeat the level.
<i>Pri-Sec (Primary-Secondary)</i>	A school that provides both primary and secondary levels, e.g. Paul V1 College has Year 7 & 8 levels. It should be noted that Robert Louis Stevenson School is counted as two schools because of their physical locations.
<i>SPELL Test</i>	A test taken by all year 4 and year 6 students in Government schools. Most Non-Government schools also participate, but it is not compulsory. It provides an indication of the students whose learning outcomes are identified as being at risk so that they receive attention from teachers in their reading and numeracy programmes.
<i>Student Teacher Ratio</i>	is calculated as the number of students at a school divided by the total number of teachers (including Principals) at the school. Data is from Annual School Census.
<i>Transitional Rate</i>	is the percentage of students who complete one level and move on to the immediate level. For example, the transitional rate into Post-Secondary studies is the number of students who commenced post-secondary education in 2010 (Institute of Higher Education, Institute of Technology) as a percentage of the students who were in Year 13 in 2009.

Part 1 – Data from School Census

*Produced using Manumea, the School
Census Information System*

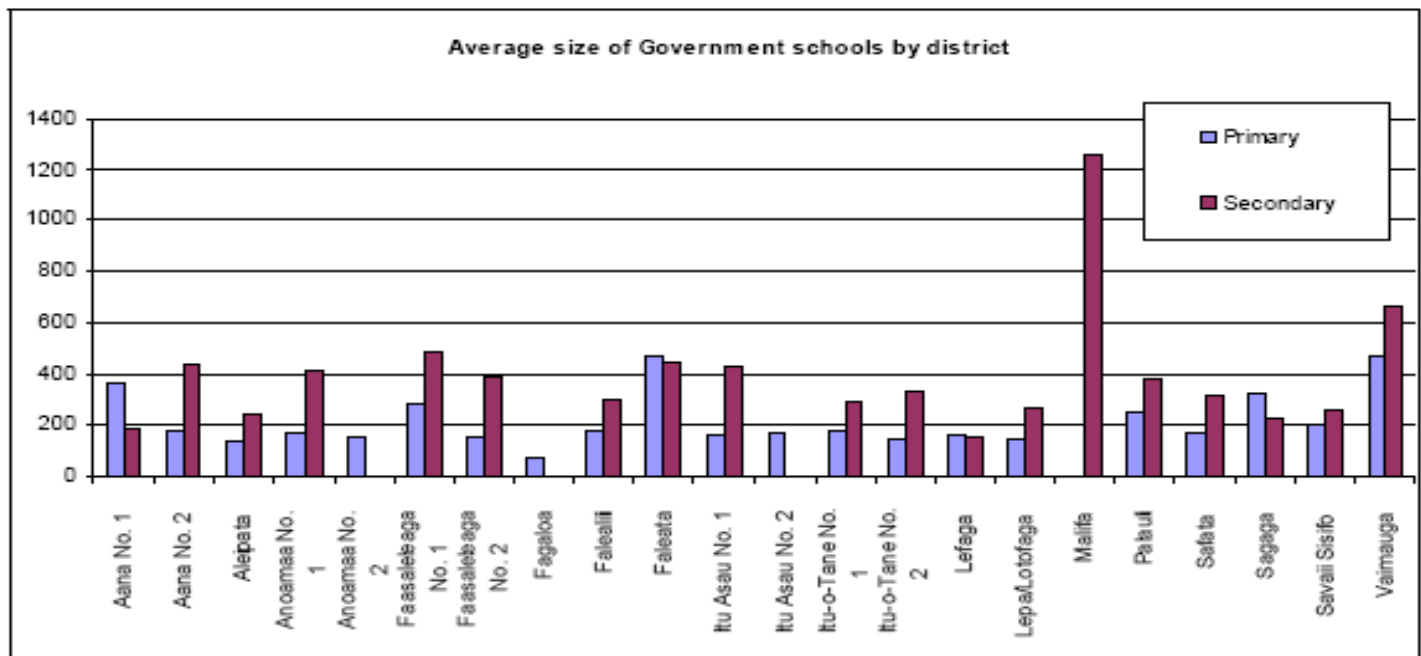
Number of schools by school type and district, 2010

Region/District	Government				Mission				Private				Grand Total
	Primary	Pri-Sec	Secondary	Total	Primary	Pri-Sec	Secondary	Total	Primary	Pri-Sec	Secondary	Total	
Apia Urban													
Faleata	10		1	11	1	1	3	5	5	1	1	7	23
Malifa			1	1									1
Vaimauga	11		3	14	3	1	3	7	2			2	23
Apia Urban Total	21		5	26	4	2	6	12	7	1	1	9	47
Rest of Upolu													
Aana No. 1	7		1	8	1	1	1	3					11
Aana No. 2	10		1	11									11
Aleipata	8		1	9									9
Anoamaa No. 1	4		1	5									5
Anoamaa No. 2	6			6	2			2					8
Fagaloa	4			4									4
Falealili	9		2	11									11
Lefaga	4		1	5									5
Lepa/Lotofaga	5		1	6									6
Safata	8		1	9									9
Sagaga	8		1	9	3		2	5					14
Rest of Upolu Total	73		10	83	6	1	3	10					93
Savaii													
Faasaleleaga No. 1	6		1	7	2		1	3					10
Faasaleleaga No. 2	6		1	7	2	1		3					10
Itu Asau No. 1	5		1	6									6
Itu Asau No. 2	4			4									4
Itu-o-Tane No. 1	5		2	7									7
Itu-o-Tane No. 2	7		1	8		1		1					9
Palauli	7		1	8			1	1					9
Savaii Sisifo	8		2	10									10
Savaii Total	48		9	57	4	2	2	8					65
Grand Total	142		24	166	14	5	11	30	7	1	1	9	205



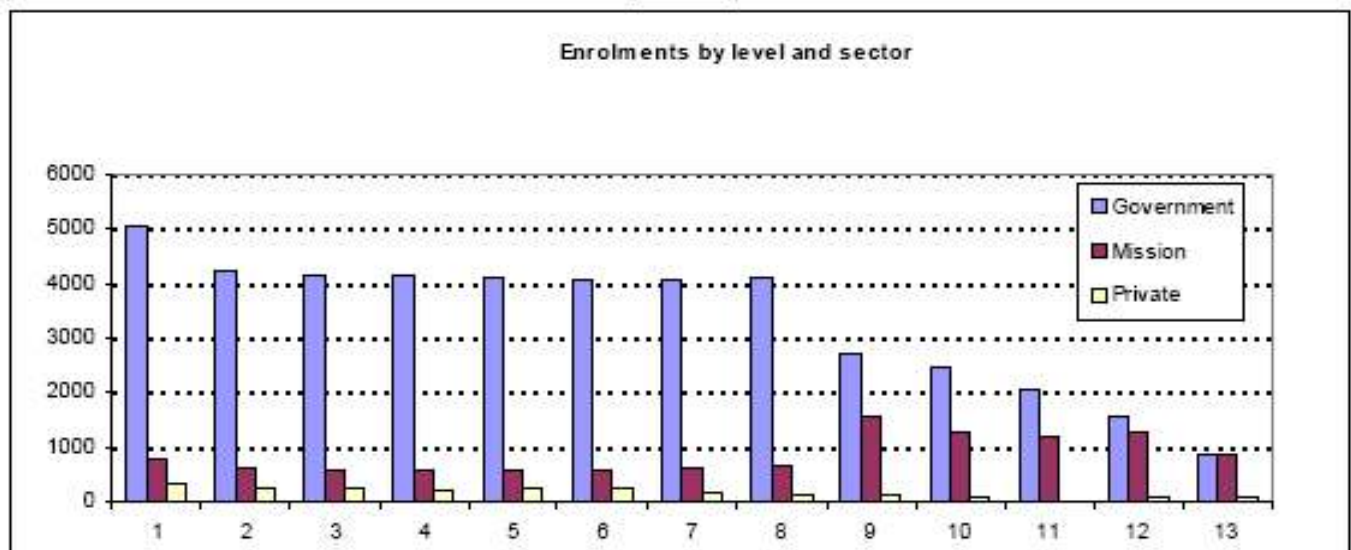
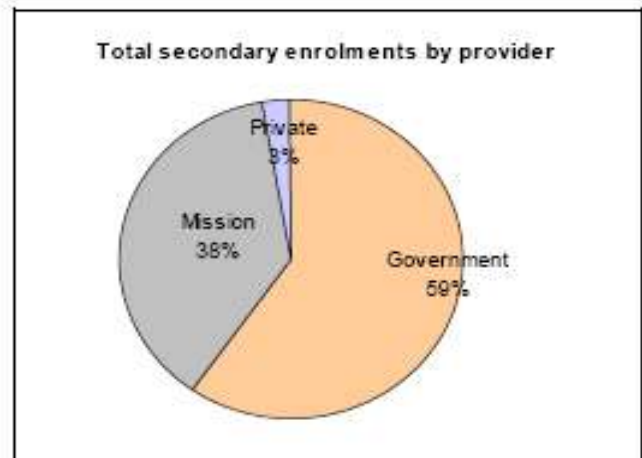
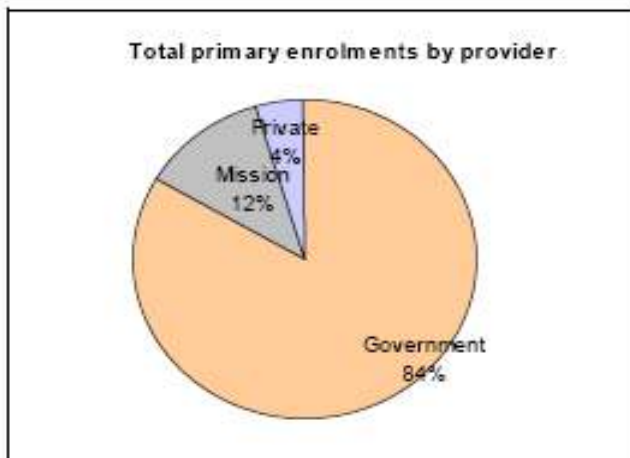
Size of Government schools by district, 2010

Region/District	Primary Schools				Secondary Schools			
	Number	Average Size	Minimum Size	Maximum Size	Number	Average Size	Minimum Size	Maximum Size
Apia Urban								
Faleata	10	477	272	849	1	445	445	445
Malifa					1	1260	1260	1260
Vaimauga	11	475	236	1414	3	669	505	861
Apia Urban Total	21	476	236	1414	5	742	445	1260
Rest of Upolu								
Aana No. 1	7	367	217	588	1	191	191	191
Aana No. 2	10	181	97	317	1	442	442	442
Aleipata	8	136	55	185	1	244	244	244
Anoamaa No. 1	4	171	134	223	1	416	416	416
Anoamaa No. 2	6	156	44	313				
Fagaloa	4	71	49	90				
Falealili	9	183	92	435	2	300	218	382
Lefaga	4	161	72	278	1	156	156	156
Lepa/Lotofaga	5	146	94	221	1	263	263	263
Safata	8	174	85	271	1	313	313	313
Sagaga	8	321	194	402	1	232	232	232
Rest of Upolu Total	73	196	44	588	10	286	156	442
Savaii								
Faasaleleaga No. 1	6	285	166	481	1	487	487	487
Faasaleleaga No. 2	6	154	72	231	1	391	391	391
Itu Asau No. 1	5	157	100	230	1	430	430	430
Itu Asau No. 2	4	173	87	251				
Itu-o-Tane No. 1	5	183	135	228	2	291	215	367
Itu-o-Tane No. 2	7	146	53	253	1	337	337	337
Palauli	7	253	145	490	1	383	383	383
Savaii Sisifo	9	203	144	323	2	256	250	262
Savaii Total	49	197	53	490	9	347	215	487
Grand Total	143	238	44	1414	24	404	156	1260



School enrolments by level, gender and status, 2010

Level	Government			Mission			Private			All Schools		
	Males	Females	Total	Males	Females	Total	Males	Females	Total	Males	Females	Total
1	2,641	2,400	5,041	363	417	780	137	171	308	3,141	2,988	6,129
2	2,241	1,992	4,233	307	326	633	131	130	261	2,679	2,448	5,127
3	2,188	1,966	4,174	294	282	576	127	109	236	2,609	2,377	4,986
4	2,205	1,965	4,170	298	295	593	128	101	229	2,631	2,361	4,992
5	2,099	2,014	4,113	288	297	585	113	121	234	2,500	2,432	4,932
6	2,140	1,924	4,064	272	287	559	119	122	241	2,531	2,333	4,864
7	2,200	1,866	4,066	328	312	640	75	87	162	2,603	2,265	4,868
8	2,148	1,971	4,119	315	344	659	77	56	133	2,540	2,371	4,911
Primary Total	17,862	16,118	33,980	2,465	2,560	5,025	907	897	1,804	21,234	19,575	40,809
9	1,470	1,244	2,714	711	850	1,561	53	73	126	2,234	2,167	4,401
10	1,170	1,312	2,482	599	659	1,258	48	56	104	1,817	2,027	3,844
11	992	1,044	2,036	560	645	1,205	0	0	0	1,552	1,689	3,241
12	710	851	1,561	546	721	1,267	44	58	102	1,300	1,630	2,930
13	341	556	897	367	503	870	42	44	86	750	1,103	1,853
Secondary Total	4,683	5,007	9,690	2,783	3,378	6,161	187	231	418	7,653	8,616	16,269
Grand Total	22,545	21,125	43,670	5,248	5,938	11,186	1,094	1,128	2,222	28,887	28,191	57,078

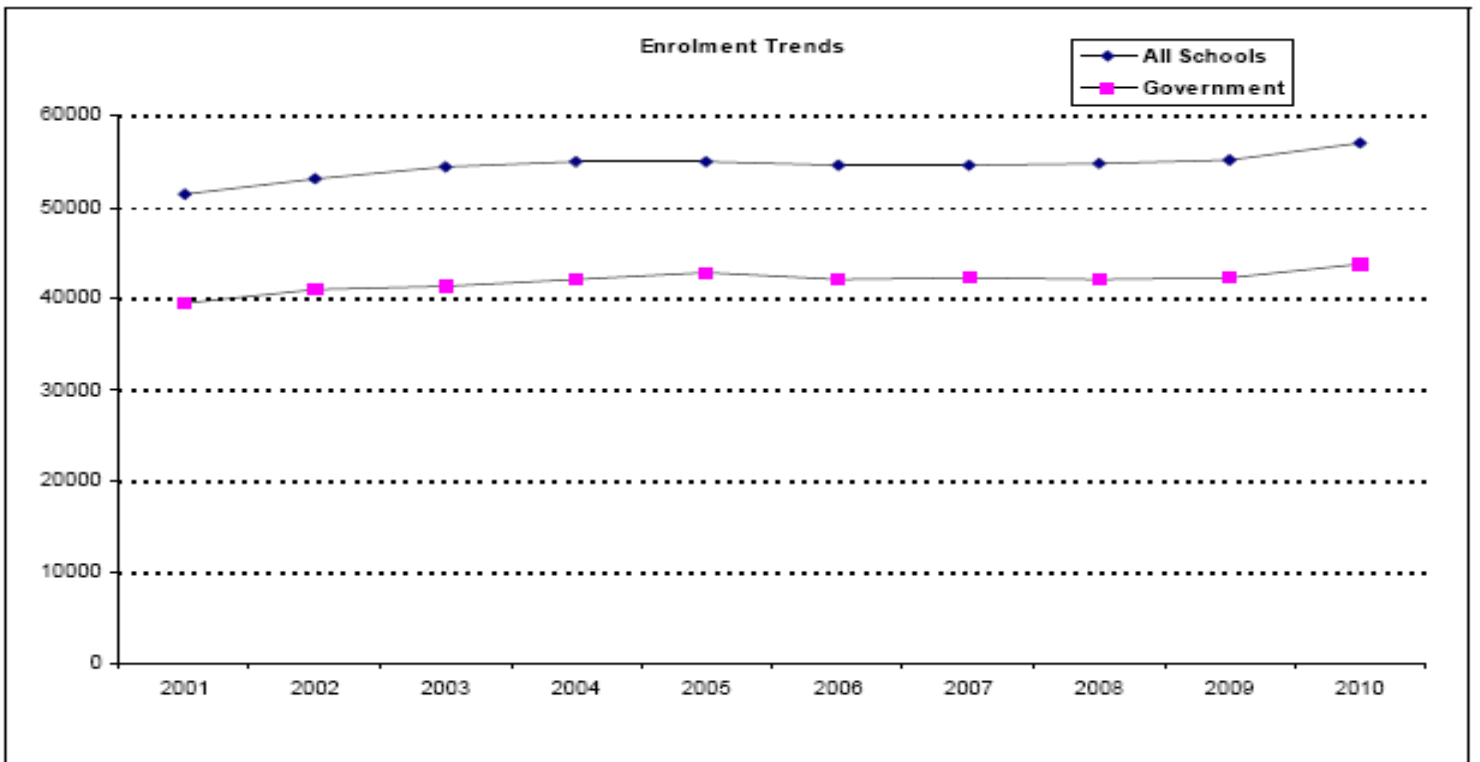


School enrolments for all schools

Year	Primary									Secondary						TOTAL	% Increase
	1	2	3	4	5	6	7	8	Total	9	10	11	12	13	Total		
2001	5,802	5,001	4,830	4,878	4,480	4,214	4,184	4,303	37,890	3,629	3,257	2,805	2,565	1,395	13,651	51,341	
2002	5,987	5,172	5,112	4,982	4,757	4,520	4,167	4,241	38,938	3,719	3,306	2,859	2,820	1,420	14,124	53,062	3
2003	5,893	5,424	5,119	5,104	4,769	4,750	4,390	4,190	39,839	3,729	3,563	3,038	2,881	1,616	14,827	54,466	3
2004	5,704	5,257	5,383	5,134	5,045	4,652	4,620	4,378	40,173	3,673	3,357	3,152	2,822	1,752	14,756	54,929	1
2005	5,471	5,130	5,153	5,248	5,041	4,921	4,591	4,519	40,074	3,876	3,355	2,973	3,101	1,584	14,889	54,963	0
2006	5,407	4,867	4,895	5,099	5,146	4,835	4,810	4,461	39,520	4,020	3,531	2,892	2,916	1,756	15,115	54,635	-1
2007	5,273	4,930	4,855	4,922	5,066	5,032	4,789	4,601	39,468	4,028	3,649	2,964	2,909	1,652	15,202	54,670	0
2008	5,239	4,919	4,895	4,955	4,789	4,969	4,906	4,704	39,376	4,100	3,684	3,019	2,863	1,657	15,323	54,699	0
2009	5,263	4,830	4,983	4,925	4,899	4,763	4,896	4,820	39,379	4,274	3,736	3,108	2,926	1,669	15,713	55,092	1
2010	6,129	5,127	4,986	4,992	4,932	4,864	4,868	4,911	40,809	4,401	3,844	3,241	2,930	1,853	16,269	57,078	4

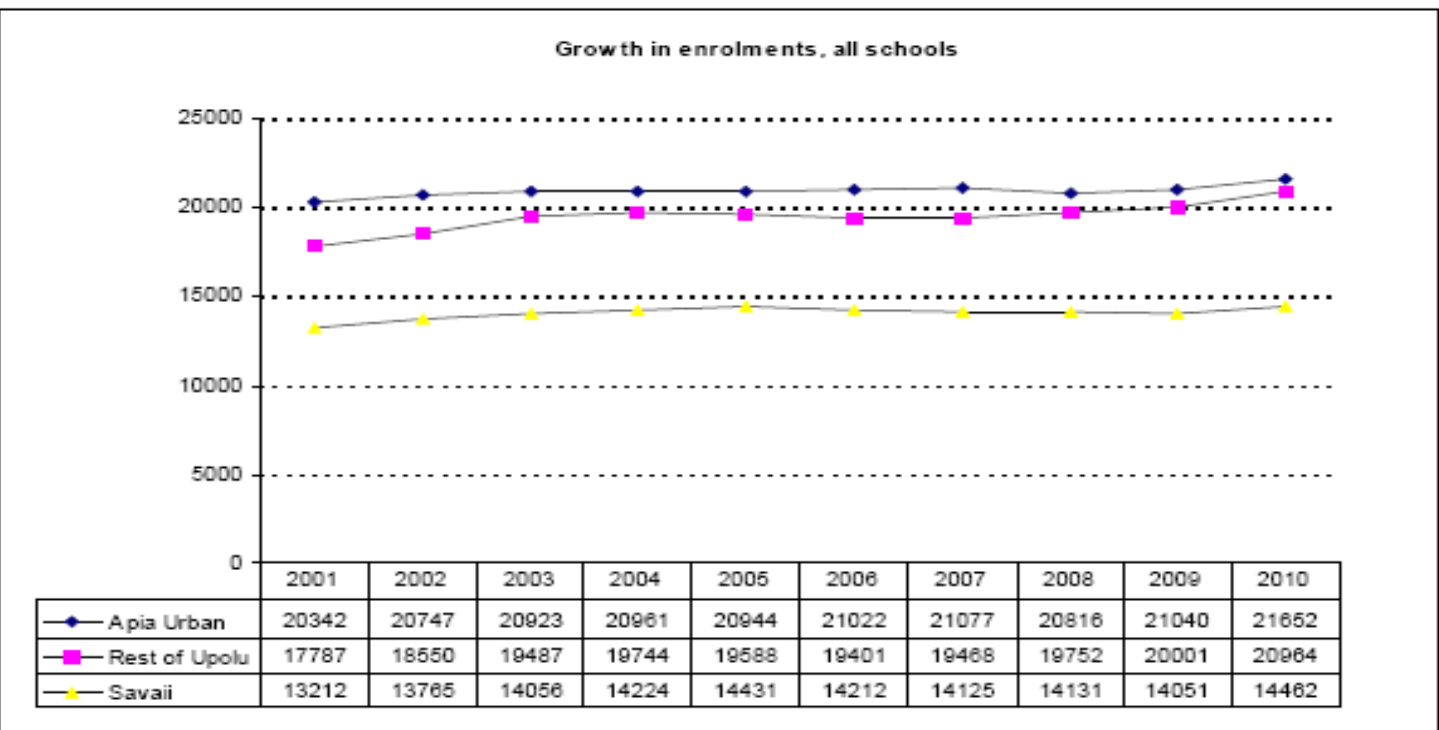
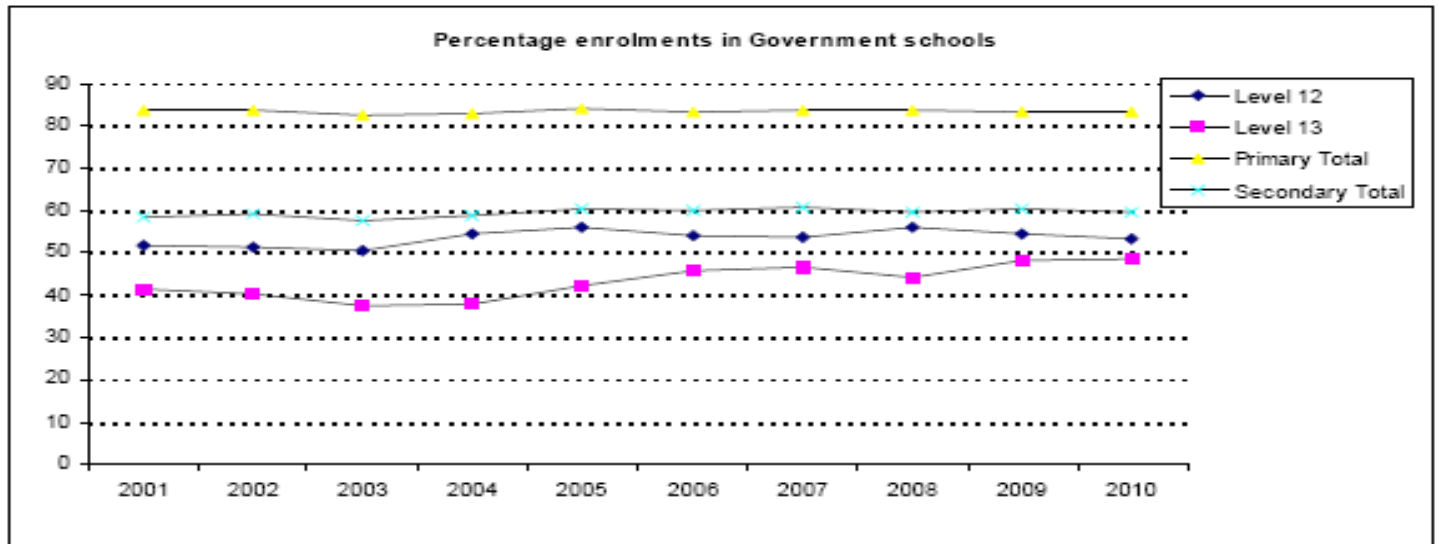
School enrolments for Government schools

Year	Primary									Secondary						TOTAL	% Increase
	1	2	3	4	5	6	7	8	Total	9	10	11	12	13	Total		
2001	4,832	4,128	4,000	4,117	3,738	3,529	3,522	3,637	31,503	2,263	2,021	1,754	1,331	580	7,949	39,452	
2002	5,029	4,330	4,242	4,163	4,009	3,780	3,498	3,572	32,623	2,386	2,102	1,851	1,449	571	8,359	40,982	4
2003	4,899	4,440	4,202	4,163	3,905	3,961	3,655	3,479	32,704	2,359	2,215	1,900	1,458	606	8,538	41,242	1
2004	4,718	4,384	4,461	4,258	4,188	3,875	3,802	3,620	33,306	2,334	2,141	2,022	1,533	663	8,693	41,999	2
2005	4,561	4,283	4,356	4,437	4,292	4,160	3,849	3,781	33,719	2,519	2,152	1,930	1,738	671	9,010	42,729	2
2006	4,481	3,974	4,081	4,305	4,338	4,105	3,984	3,702	32,970	2,487	2,235	1,962	1,577	806	9,067	42,037	-2
2007	4,372	4,085	4,026	4,135	4,299	4,299	3,994	3,811	33,021	2,533	2,304	2,064	1,556	771	9,228	42,249	1
2008	4,364	4,077	4,071	4,106	3,996	4,217	4,129	3,955	32,915	2,534	2,273	2,000	1,607	731	9,145	42,060	0
2009	4,325	4,009	4,146	4,102	4,036	4,008	4,106	4,052	32,784	2,765	2,292	2,052	1,593	802	9,504	42,288	1
2010	5,041	4,233	4,174	4,170	4,113	4,064	4,066	4,119	33,980	2,714	2,482	2,036	1,561	897	9,690	43,670	3



Percentage enrolments in Government schools

Year	Primary									Secondary						TOTAL
	1	2	3	4	5	6	7	8	Total	9	10	11	12	13	Total	
2001	83.3	82.5	82.8	84.4	83.4	83.7	84.2	84.5	83.6	62.4	62.1	62.5	51.9	41.6	58.2	76.8
2002	84.0	83.7	83.0	83.6	84.3	83.6	83.9	84.2	83.8	64.2	63.6	64.7	51.4	40.2	59.2	77.2
2003	83.1	81.9	82.1	81.6	81.9	83.4	83.3	83.0	82.5	63.3	62.2	62.5	50.6	37.5	57.6	75.7
2004	82.7	83.4	82.9	82.9	83.0	83.3	82.3	82.7	82.9	63.5	63.8	64.1	54.3	37.8	58.9	76.5
2005	83.4	83.5	84.5	84.5	85.1	84.5	83.8	83.7	84.1	65.0	64.1	64.9	56.0	42.4	60.5	77.7
2006	82.9	81.7	83.4	84.4	84.3	84.9	82.8	83.0	83.4	61.9	63.3	67.8	54.1	45.9	60.0	76.9
2007	82.9	82.9	82.9	84.0	84.9	85.4	83.4	82.8	83.7	62.9	63.1	69.6	53.5	46.7	60.7	77.3
2008	83.3	82.9	83.2	82.9	83.4	84.9	84.2	84.1	83.6	61.8	61.7	66.2	56.1	44.1	59.7	76.9
2009	82.2	83.0	83.2	83.3	82.4	84.1	83.9	84.1	83.3	64.7	61.3	66.0	54.4	48.1	60.5	76.8
2010	82.2	82.6	83.7	83.5	83.4	83.6	83.5	83.9	83.3	61.7	64.6	62.8	53.3	48.4	59.6	76.5

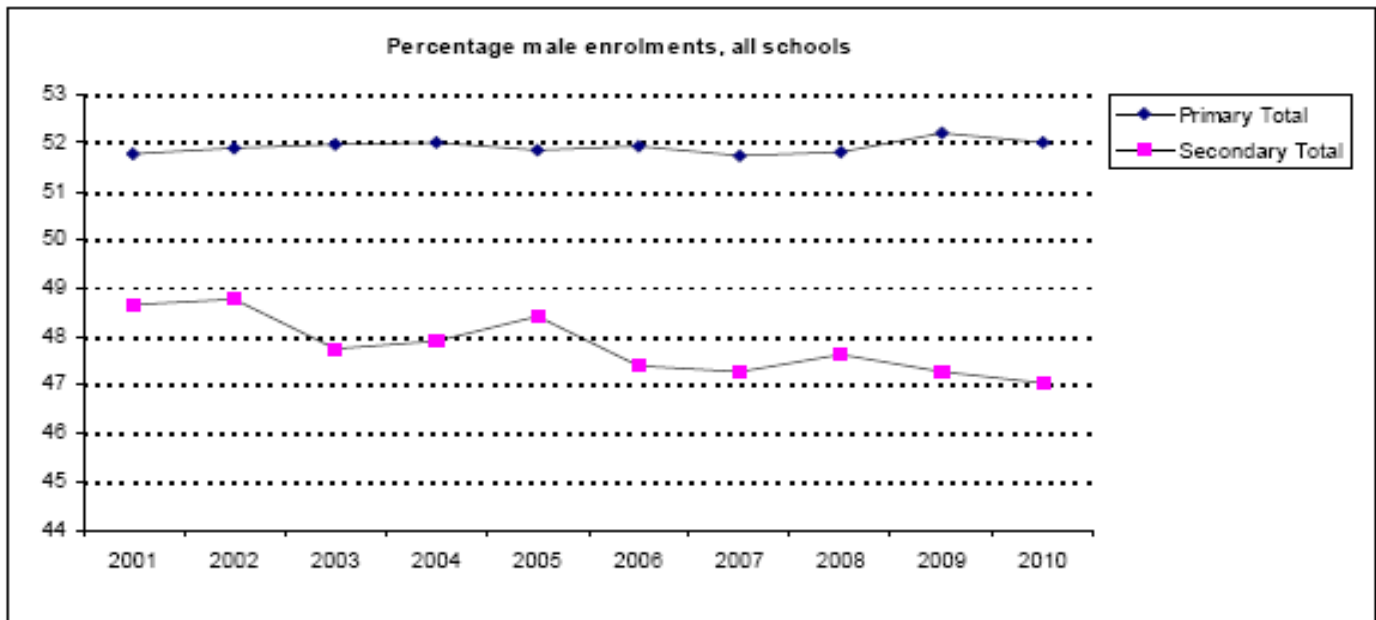


Male school enrolments, all schools

Year	Primary									Secondary						TOTAL	% Increase
	1	2	3	4	5	6	7	8	Total	9	10	11	12	13	Total		
2001	2,964	2,623	2,526	2,592	2,303	2,173	2,122	2,216	19,519	1,795	1,579	1,420	1,194	655	6,643	26,162	
2002	3,105	2,634	2,684	2,587	2,531	2,345	2,149	2,178	20,213	1,880	1,620	1,439	1,323	618	6,890	27,103	4
2003	3,111	2,833	2,606	2,678	2,440	2,531	2,261	2,144	20,604	1,837	1,728	1,469	1,338	705	7,077	27,681	2
2004	2,974	2,776	2,832	2,629	2,638	2,373	2,436	2,237	20,895	1,840	1,598	1,548	1,319	766	7,071	27,966	1
2005	2,883	2,696	2,708	2,735	2,556	2,559	2,323	2,322	20,782	1,989	1,660	1,401	1,435	727	7,212	27,994	0
2006	2,821	2,533	2,596	2,690	2,701	2,438	2,460	2,283	20,522	2,002	1,731	1,341	1,349	739	7,162	27,684	-1
2007	2,779	2,512	2,510	2,614	2,617	2,622	2,424	2,337	20,415	1,987	1,792	1,367	1,364	676	7,186	27,601	0
2008	2,748	2,556	2,513	2,571	2,506	2,596	2,531	2,375	20,396	2,024	1,797	1,373	1,387	719	7,300	27,696	0
2009	2,757	2,566	2,640	2,508	2,536	2,562	2,505	2,484	20,558	2,134	1,779	1,469	1,305	739	7,426	27,984	1
2010	3,141	2,679	2,609	2,631	2,500	2,531	2,603	2,540	21,234	2,234	1,817	1,552	1,300	750	7,653	28,887	3

Percentage male enrolments, all schools

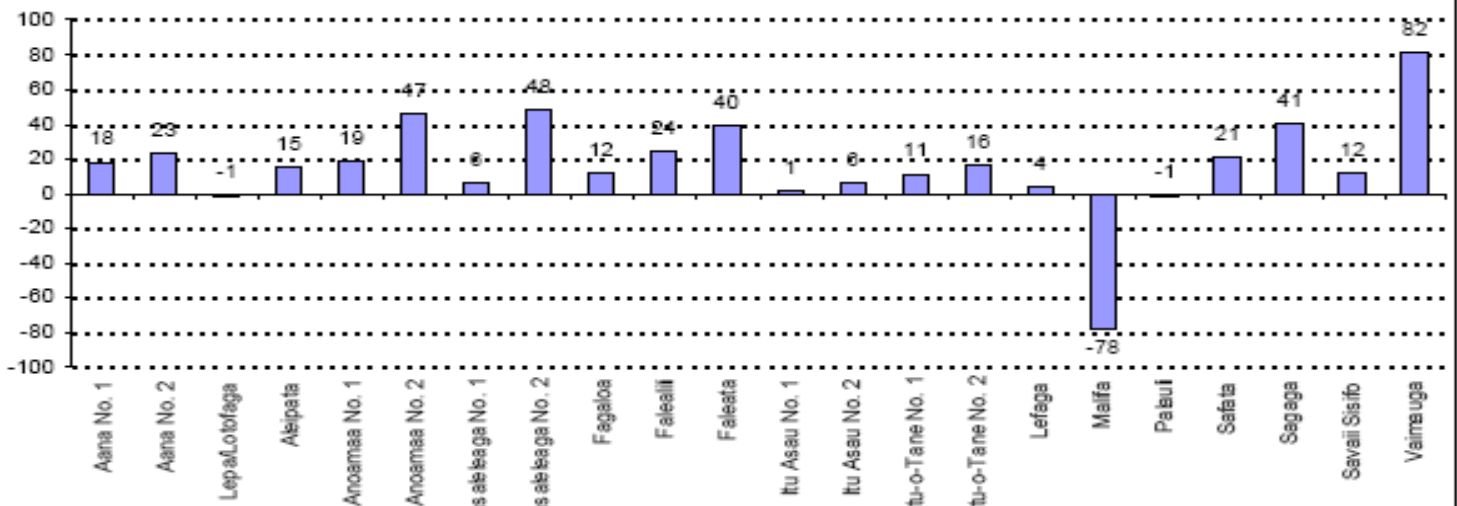
Year	Primary									Secondary						TOTAL
	1	2	3	4	5	6	7	8	Total	9	10	11	12	13	Total	
2001	51.1	52.4	52.3	53.2	51.4	51.6	50.7	51.5	51.8	49.5	48.5	50.6	46.5	47.0	48.7	51.0
2002	51.9	50.9	52.5	51.9	53.2	51.9	51.6	51.4	51.9	50.8	49.0	50.3	46.9	43.5	48.8	51.1
2003	52.8	52.2	50.9	52.5	51.2	53.3	51.5	51.2	52.0	49.3	48.5	48.4	46.4	43.6	47.7	50.8
2004	52.1	52.8	52.6	51.2	52.3	51.0	52.7	51.1	52.0	50.1	47.6	49.1	46.7	43.7	47.9	50.9
2005	52.7	52.6	52.6	52.1	50.7	52.0	50.6	51.4	51.9	51.3	49.5	47.1	46.3	45.9	48.4	50.9
2006	52.2	52.0	53.0	52.8	52.5	50.4	51.1	51.2	51.9	49.8	49.0	46.4	46.3	42.1	47.4	50.7
2007	52.7	51.0	51.7	53.1	51.7	52.1	50.6	50.8	51.7	49.3	49.1	46.1	46.9	40.9	47.3	50.5
2008	52.5	52.0	51.3	51.9	52.3	52.2	51.6	50.5	51.8	49.4	48.8	45.5	48.4	43.4	47.6	50.6
2009	52.4	53.1	53.0	50.9	51.8	53.8	51.2	51.5	52.2	49.9	47.6	47.3	44.6	44.3	47.3	50.8
2010	51.2	52.3	52.3	52.7	50.7	52.0	53.5	51.7	52.0	50.8	47.3	47.9	44.4	40.5	47.0	50.6



School enrolments by district and maximum level provided, 2010

Region/District	Primary Enrolments, all schools			Secondary enrolments, all schools			Max level in 1994		Max level in 2010	
	1994	2010	% Increase	1994	2010	% Increase	Govt	Non-Govt	Govt	Non-Govt
Faleata	4202	6569	56	2409	2676	11	11	13	13	13
Malifa	4223			1471	1260	-14	12		13	
Vaimauga	4142	7990	93	1990	3157	59	13	13	13	13
Apia Urban Total	12567	14559	16	5870	7093	21	13	13	13	13
Aana No. 1	2303	2793	21	760	820	8	11	12	12	13
Aana No. 2	1600	1807	13	227	442	95	11		13	
Aleipata	915	1087	19	246	244	-1	11		12	
Anoamaa No. 1	767	684	-11	156	416	167	11		13	
Anoamaa No. 2	936	1373	47				8	8	8	8
Fagaloa	252	282	12				8		8	
Falealili	1472	1644	12	342	600	75	11		13	
Lefaga	656	644	-2	113	156	38	11		12	
Lepa/Lotofaga	795	730	-8	213	263	23	11		13	
Safata	1235	1391	13	171	313	83	11		12	
Sagaga	2433	3469	43	1315	1806	37	11	13	13	13
Rest of Upolu Total	13364	15904	19	3543	5060	43	11	13	13	13
Faasaleleaga No. 1	1795	1974	10	765	749	-2	11	13	13	13
Faasaleleaga No. 2	846	1220	44	447	694	55	11	13	13	13
Itu Asau No. 1	983	784	-20	217	430	98	11		13	
Itu Asau No. 2	652	692	6				8		8	
Itu-o-Tane No. 1	839	915	9	505	582	15	13		13	
Itu-o-Tane No. 2	1101	1163	6	217	366	69	11		12	9
Palauli	1818	1774	-2	771	783	2	11	13	13	13
Savaii Sisifo	1764	1624	3	326	512	57	11		13	
Savaii Total	9798	10346	6	3248	4116	27	13	13	13	13
Grand Total	35729	40809	14	12681	16289	28	13	13	13	13

Percentage growth in enrolments since 1994, all schools

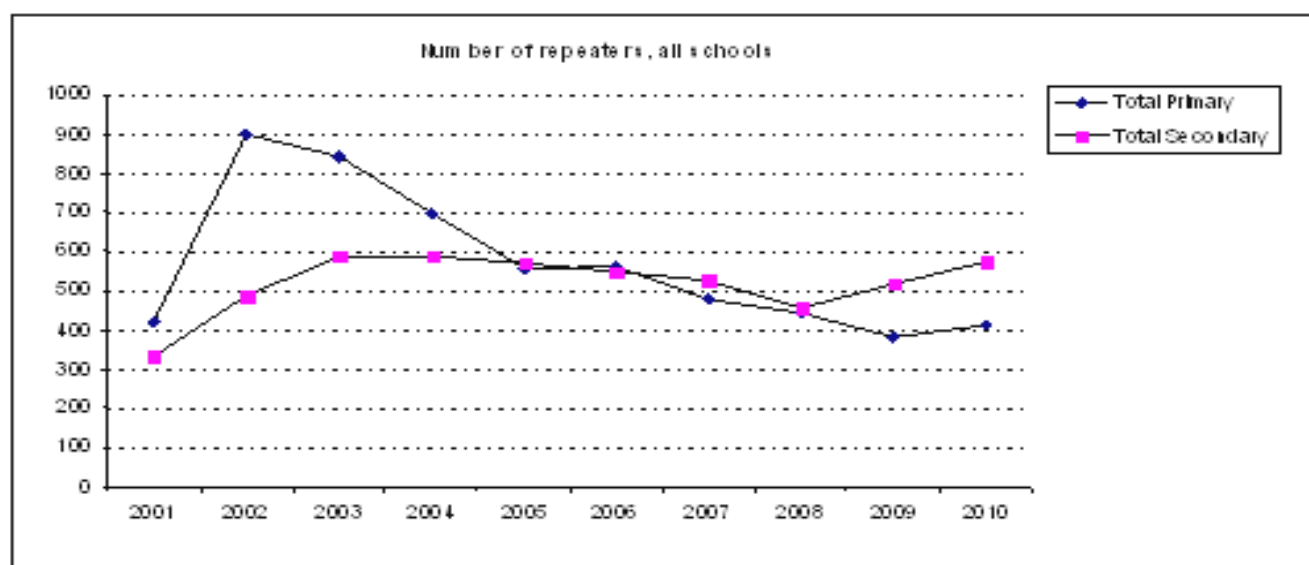


Number of repeaters by level in 2010

Level	Number of Repeaters				Percentage of Enrolment			
	Government	Mission	Private	Total	Government	Mission	Private	Total
1	97	30	5	132	1.9	3.8	1.6	2.2
2	17	11	3	31	0.4	1.7	1.1	0.6
3	20	12	5	37	0.5	2.1	2.1	0.7
4	8	11	5	24	0.2	1.9	2.2	0.5
5	10	15	3	28	0.2	2.6	1.3	0.6
6	13	14	5	32	0.3	2.5	2.1	0.7
7	24	14	5	43	0.6	2.2	3.1	0.9
8	63	23	1	87	1.5	3.5	0.8	1.8
Total Primary	252	130	32	414	0.7	2.6	1.8	1.0
9	65	33	2	100	2.4	2.1	1.6	2.3
10	35	29	2	66	1.4	2.3	1.9	1.7
11	103	41	0	144	5.1	3.4	0.0	4.4
12	71	88	1	160	4.5	6.9	1.0	5.5
13	25	73	4	103	2.9	8.4	4.7	5.6
Total Secondary	300	264	9	573	3.1	4.3	2.2	3.5
Total	552	394	41	987	1.3	3.5	1.8	1.7

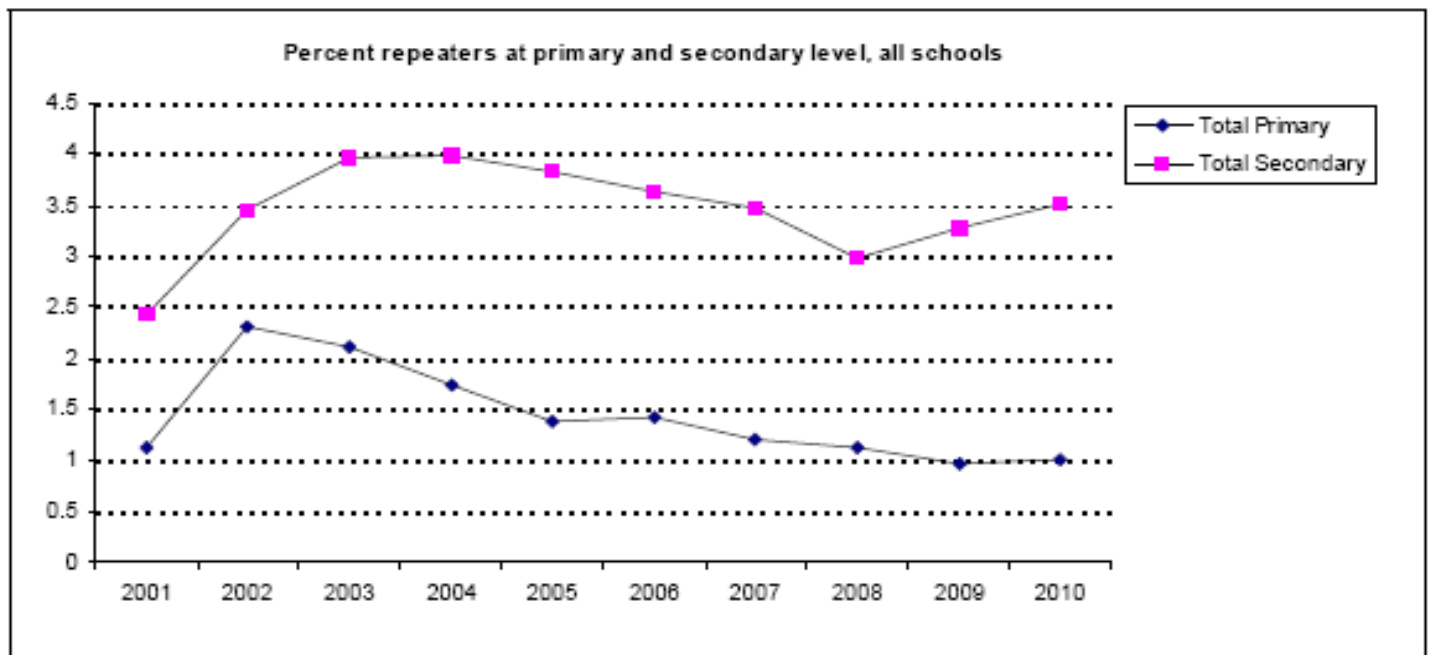
Repeaters in all schools by level

Year	Primary									Secondary						TOTAL
	1	2	3	4	5	6	7	8	Total	9	10	11	12	13	Total	
2001	142	36	20	29	26	12	34	122	421	15	14	112	113	78	332	753
2002	306	88	69	83	66	47	53	188	900	20	12	87	258	112	489	1,389
2003	345	70	58	66	40	62	45	155	841	19	8	139	279	143	588	1,429
2004	234	69	51	55	63	43	33	148	696	9	32	112	339	96	588	1,284
2005	223	51	34	41	36	24	41	105	555	32	28	88	274	148	570	1,125
2006	206	51	46	44	31	25	28	130	561	24	25	176	204	120	549	1,110
2007	205	39	22	55	17	28	42	70	478	46	12	108	245	116	527	1,005
2008	125	43	39	62	26	50	38	61	445	23	27	113	185	109	457	902
2009	125	48	41	40	22	33	12	60	381	62	56	150	163	85	516	897
2010	132	31	37	24	28	32	43	87	414	100	66	144	160	103	573	987



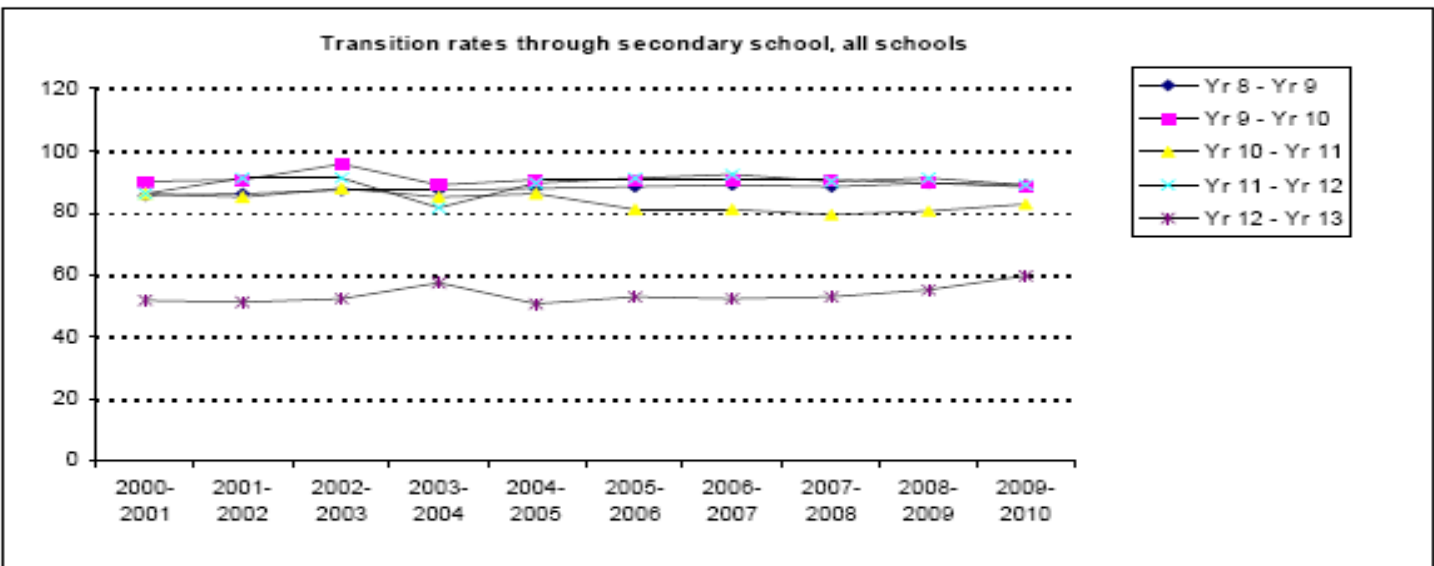
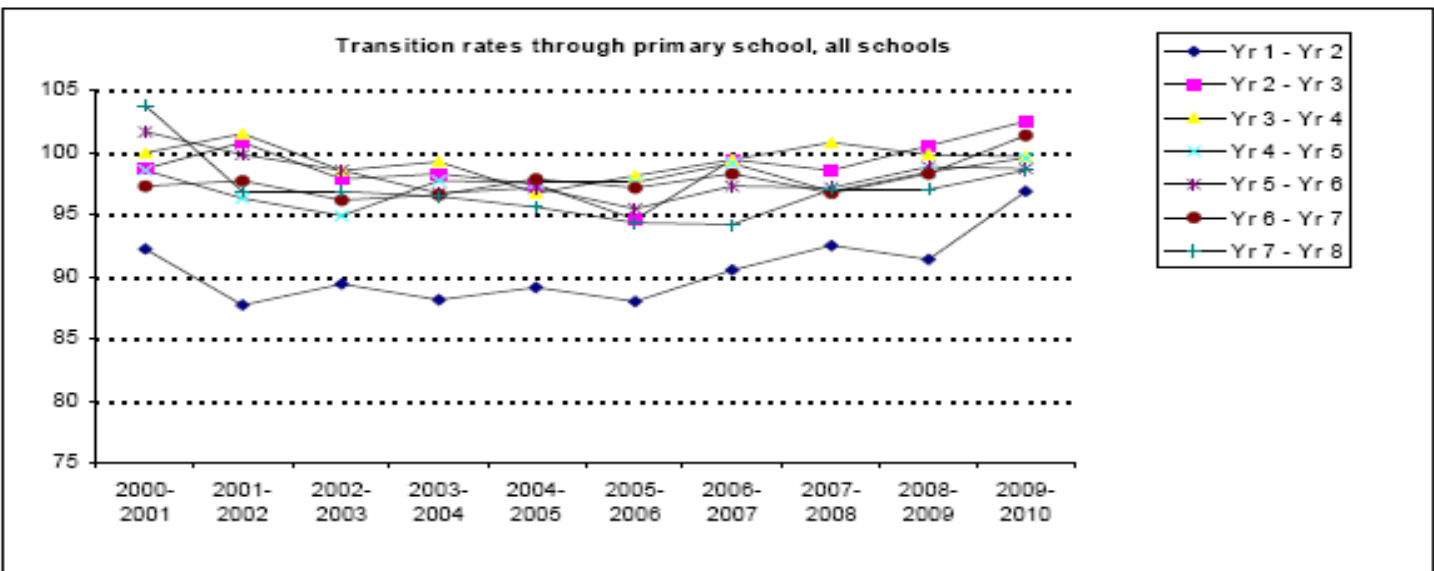
Percentage of repeaters in all schools by level

Year	Primary									Secondary						TOTAL
	1	2	3	4	5	6	7	8	Total	9	10	11	12	13	Total	
2001	2.4	0.7	0.4	0.6	0.6	0.3	0.8	2.8	1.1	0.4	0.4	4.0	4.4	5.6	2.4	1.5
2002	5.1	1.7	1.3	1.7	1.4	1.0	1.3	4.4	2.3	0.5	0.4	3.0	9.1	7.9	3.5	2.6
2003	5.9	1.3	1.1	1.3	0.8	1.3	1.0	3.7	2.1	0.5	0.2	4.6	9.7	8.8	4.0	2.6
2004	4.1	1.3	0.9	1.1	1.2	0.9	0.7	3.4	1.7	0.2	1.0	3.6	12.0	5.5	4.0	2.3
2005	4.1	1.0	0.7	0.8	0.7	0.5	0.9	2.3	1.4	0.8	0.8	3.0	8.8	9.3	3.8	2.0
2006	3.8	1.0	0.9	0.9	0.6	0.5	0.6	2.9	1.4	0.6	0.7	6.1	7.0	6.8	3.6	2.0
2007	3.9	0.8	0.5	1.1	0.3	0.6	0.9	1.5	1.2	1.1	0.3	3.6	8.4	7.0	3.5	1.8
2008	2.4	0.9	0.8	1.3	0.5	1.0	0.8	1.3	1.1	0.6	0.7	3.7	6.5	6.6	3.0	1.6
2009	2.4	1.0	0.8	0.8	0.4	0.7	0.2	1.2	1.0	1.5	1.5	4.8	5.6	5.1	3.3	1.6
2010	2.2	0.6	0.7	0.5	0.6	0.7	0.9	1.8	1.0	2.3	1.7	4.4	5.5	5.6	3.5	1.7



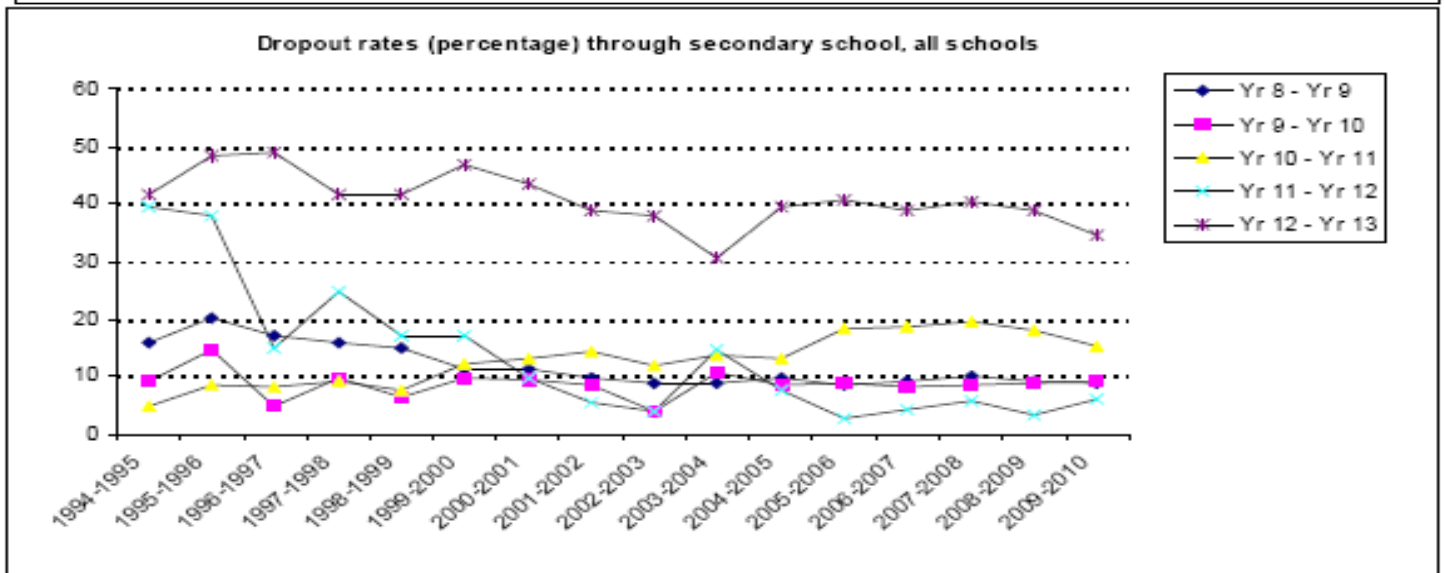
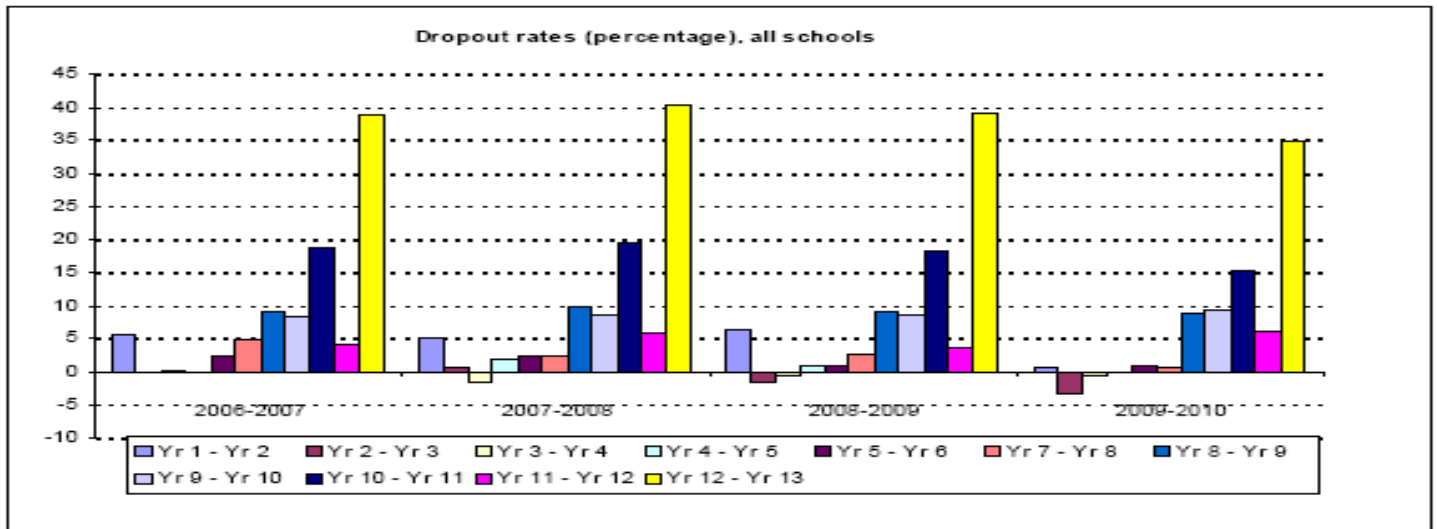
Transition rates by year level

Year	Year Levels											
	1-2	2-3	3-4	4-5	5-6	6-7	7-8	8-9	9-10	10-11	11-12	12-13
2000-2001	92	99	100	98	102	97	104	86	90	88	86	52
2001-2002	88	101	101	96	100	98	97	86	91	85	91	51
2002-2003	89	98	99	95	99	96	97	87	96	88	91	52
2003-2004	88	98	99	98	97	97	96	87	89	85	82	57
2004-2005	89	97	97	97	97	98	96	88	91	86	90	51
2005-2006	88	95	98	97	95	97	94	88	90	81	91	53
2006-2007	90	99	99	99	97	98	94	89	90	81	92	53
2007-2008	92	98	101	97	97	97	97	89	91	80	90	53
2008-2009	91	100	100	98	99	98	97	90	90	80	92	55
2009-2010	97	102	100	100	99	101	99	89	88	83	89	60



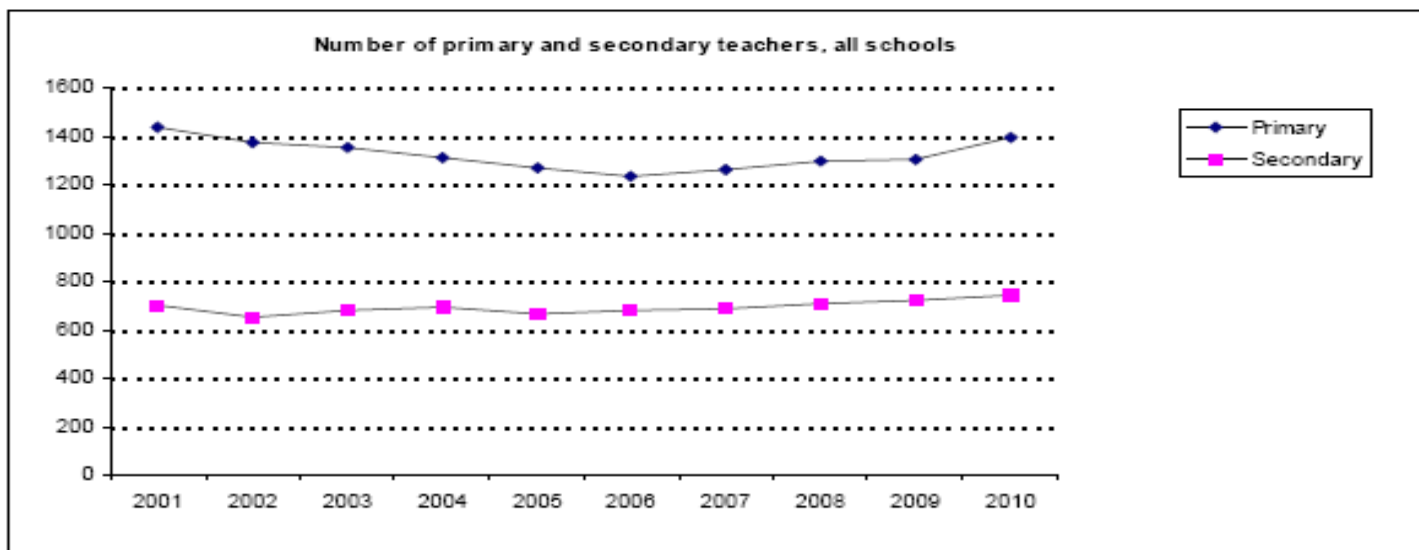
Dropout rates (percentage) by year level

Year	Year Levels											
	1-2	2-3	3-4	4-5	5-6	6-7	7-8	8-9	9-10	10-11	11-12	12-13
1994-1995	6	0	-1	1	-2	2	-2	16	9	5	39	42
1995-1996	9	1	0	3	5	4	-2	20	15	9	38	49
1996-1997	10	2	1	2	2	2	-5	17	5	8	15	49
1997-1998	9	1	0	5	1	5	-1	16	10	9	25	42
1998-1999	8	2	2	3	2	7	-1	15	6	8	17	42
1999-2000	6	-1	1	3	2	5	-3	11	10	12	17	47
2000-2001	5	1	0	1	-2	2	-5	11	10	13	10	44
2001-2002	7	-3	-3	2	-1	1	2	10	9	15	6	39
2002-2003	5	1	0	4	1	3	2	9	4	12	4	38
2003-2004	8	0	0	1	2	3	3	9	11	14	15	31
2004-2005	7	2	3	2	2	2	4	10	9	13	8	39
2005-2006	8	4	1	2	4	2	5	9	9	18	3	41
2006-2007	6	0	0	0	2	1	5	9	8	19	4	39
2007-2008	5	1	-2	2	2	2	2	10	9	20	6	40
2008-2009	6	-1	-1	1	1	1	3	9	9	18	4	39
2009-2010	1	-3	0	0	1	-2	1	9	9	15	6	35



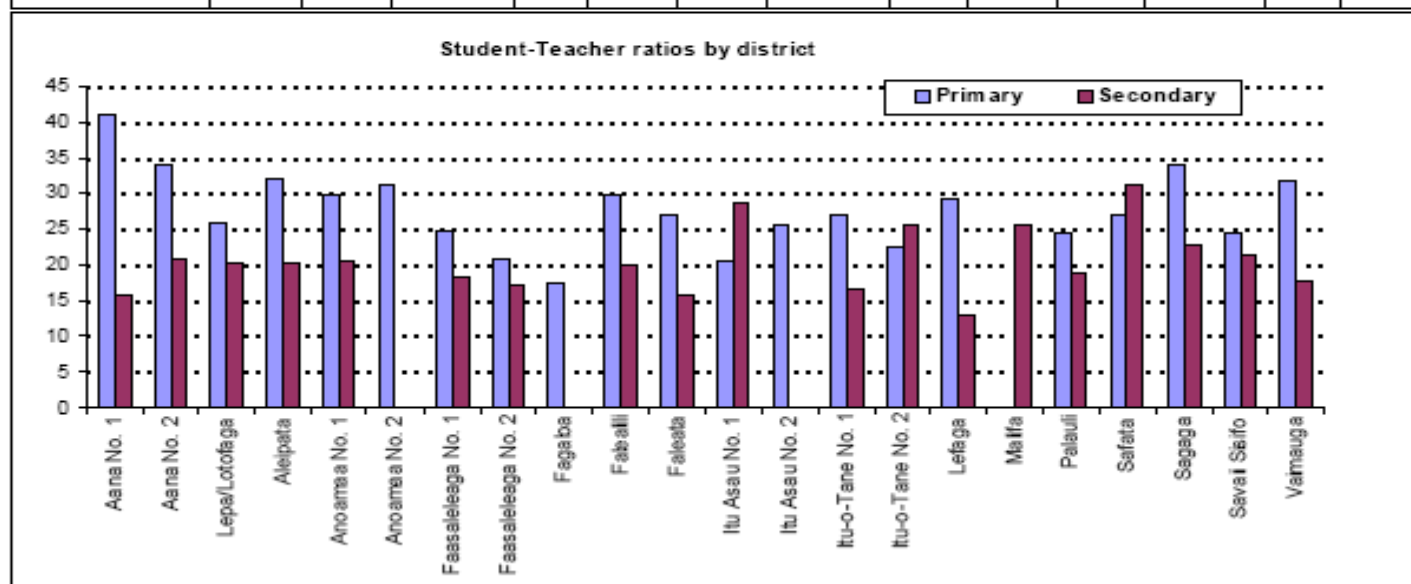
Number of teachers by school type and district, 2010

Region/District	Government				Mission				Private				TOTAL
	Primary	Pri-Sec	Second.	Total	Primary	Pri-Sec	Second.	Total	Primary	Pri-Sec	Second.	Total	
Apia Urban													
Faleata	146		28	174	15	49	56	120	73	35	15	123	417
Malifa			49	49									49
Vaimauga	145		110	255	57	27	62	146	38			38	439
Apia Urban Total	291		187	478	72	76	118	266	111	35	15	161	905
Rest of Upolu													
Aana No. 1	57		18	75	10	15	21	46					121
Aana No. 2	53		21	74									74
Aleipata	34		12	46									46
Anoamaa No. 1	23		20	43									43
Anoamaa No. 2	30			30	14			14					44
Fagaloa	16			16									16
Falealili	55		30	85									85
Lefaga	22		12	34									34
Lepa/Lotofaga	28		13	41									41
Safata	51		10	61									61
Sagaga	71		16	87	31		63	94					181
Rest of Upolu Total	440		152	592	55	15	84	154					746
Savaii													
Faasaleleaga No. 1	64		16	80	16		25	41					121
Faasaleleaga No. 2	44		19	63	12	24		36					99
Itu Asau No. 1	38		15	53									53
Itu Asau No. 2	27			27									27
Itu-o-Tane No. 1	34		35	69									69
Itu-o-Tane No. 2	45		11	56		9		9					65
Palauli	72		18	90			23	23					113
Savaii Sisifo	74		24	98									98
Savaii Total	398		138	536	28	33	48	109					645
Grand Total	1129		477	1606	155	124	250	529	111	35	15	161	2296



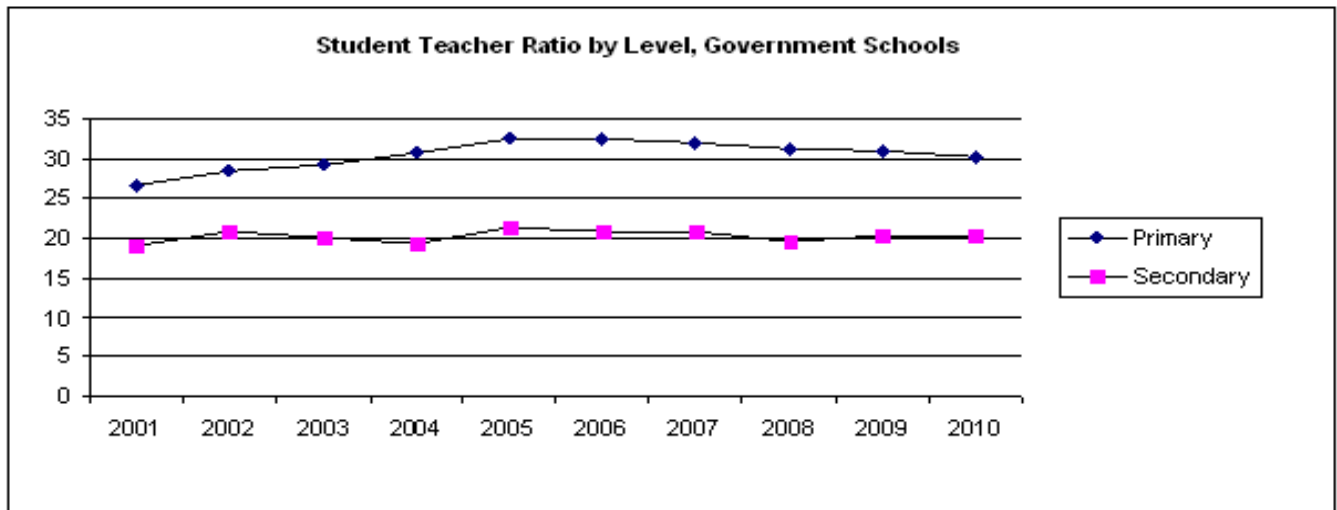
Student-Teacher ratios by school type and district, 2010

Region/District	Government				Mission				Private				Total
	Primary	Pri-Sec	Secondary	Total	Primary	Pri-Sec	Secondary	Total	Primary	Pri-Sec	Secondary	Total	
Apia Urban													
Faleata	33		16	30	24	17	21	20	16	8	13	14	22
Malifa			26	26									26
Vaimauga	36		18	28	32	20	16	23	15			15	25
Apia Urban Total	34		20	29	30	18	18	22	16	7.8	13	14	24
Rest of Upolu													
Aana No. 1	45		11	37	19	12	23	19					30
Aana No. 2	34		21	30									30
Aleipata	32		20	29									29
Anoamaa No. 1	30		21	26									26
Anoamaa No. 2	31			31	31			31					31
Fagaloa	18			18									18
Falealili	30		20	26									26
Lefaga	29		13	24									24
Lepa/Lotofaga	26		20	24									24
Safata	27		31	28									28
Sagaga	36		15	32	29		25	26					29
Rest of Upolu Total	33		19	29	28	12	25	24					28
Savaii													
Faasaleleaga No. 1	27		30	27	17		10	13					23
Faasaleleaga No. 2	21		21	21	20	15		17					19
Itu Asau No. 1	21		29	23									23
Itu Asau No. 2	26			26									26
Itu-o-Tane No. 1	27		17	22									22
Itu-o-Tane No. 2	23		31	24		19		19					24
Palauli	25		21	24			17	17					23
Savaii Sisifo	25		21	24									24
Savaii Total	24		23	24	18	16	14	16					22
Grand Total	30		20	27	27	17	20	21	16	7.8	13	14	25



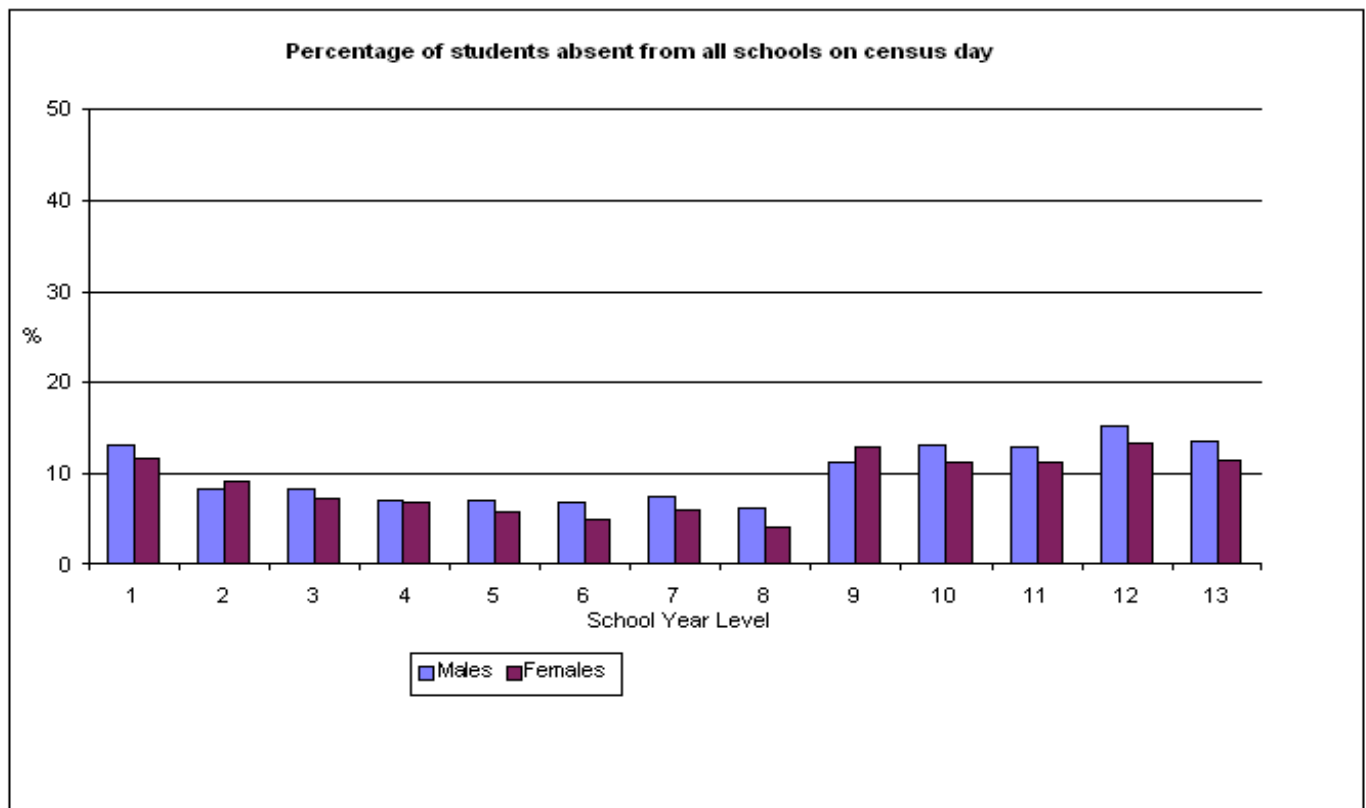
Student Teacher Ratio by Level, Government Schools

Level	Primary Student Teacher Ratio	Secondary Student Teacher Ratio
2001	26.7	19.1
2002	28.4	20.8
2003	29.2	20.1
2004	30.8	19.3
2005	32.5	21.3
2006	32.5	20.7
2007	32.1	20.9
2008	31.3	19.6
2009	30.9	20.3
2010	30.1	20.3



Number of students absent of Census Day

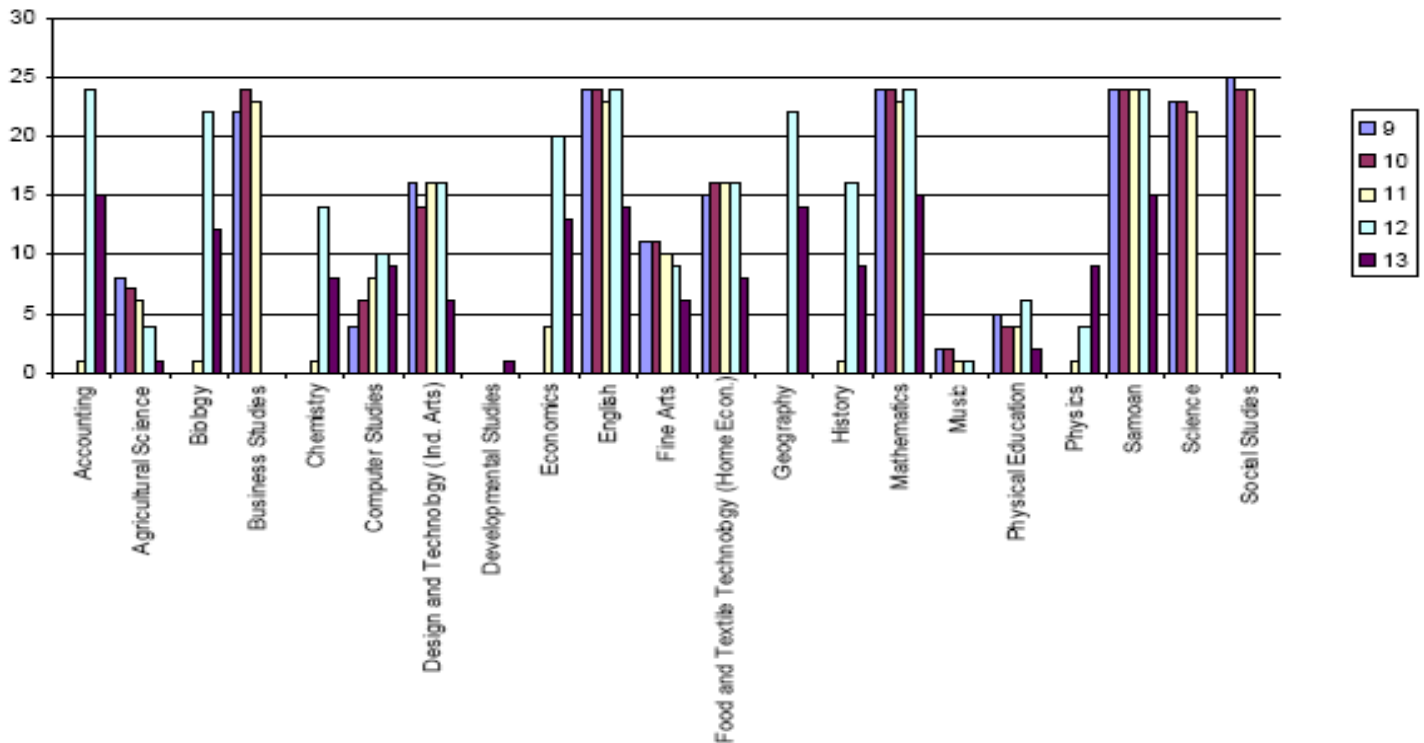
Level	Student Enrolments			No. of students absent			% Absentees		
	Males	Females	Total	Males	Females	Total	Males	Females	Total
1	3,141	2,988	6,129	414	349	763	13.2	11.7	12.4
2	2,679	2,448	5,127	226	224	450	8.4	9.2	8.8
3	2,609	2,377	4,986	220	174	394	8.4	7.3	7.9
4	2,631	2,361	4,992	188	161	349	7.1	6.8	7.0
5	2,500	2,432	4,932	177	144	321	7.1	5.9	6.5
6	2,531	2,333	4,864	177	117	294	7.0	5.0	6.0
7	2,603	2,265	4,868	194	137	331	7.5	6.0	6.8
8	2,540	2,371	4,911	158	101	259	6.2	4.3	5.3
9	2,234	2,167	4,401	252	280	532	11.3	12.9	12.1
10	1,817	2,027	3,844	240	230	470	13.2	11.3	12.2
11	1,552	1,689	3,241	201	191	392	13.0	11.3	12.1
12	1,300	1,630	2,930	199	219	418	15.3	13.4	14.3
13	750	1,103	1,853	102	127	229	13.6	11.5	12.4



Number of Government Secondary Schools Teaching Curriculum Subjects by Level

Subject	School Year Level					
	9	10	11	12	13	Total
Accounting			1	24	15	24
Agricultural Science	8	7	6	4	1	8
Biology			1	22	12	22
Business Studies	22	24	23			24
Chemistry			1	14	8	14
Computer Studies	4	6	8	10	9	10
Design and Technology (Ind. Arts)	16	14	16	16	6	16
Developmental Studies					1	1
Economics			4	20	13	20
English	24	24	23	24	14	24
Fine Arts	11	11	10	9	6	11
Food and Textile Technology (Home Econ.)	15	16	16	16	8	16
Geography				22	14	22
History			1	16	9	16
Mathematics	24	24	23	24	15	24
Music	2	2	1	1		2
Physical Education	5	4	4	6	2	6
Physics			1	4	9	9
Samoan	24	24	24	24	15	24
Science	23	23	22			23
Social Studies	25	24	24			25

Number of Government Schools teaching curriculum subjects



Primary school facilities by Controlling Authority, 2010

Controlling Authority	Facilities							
	Enrolment	Classrooms	Student Desks	Student Chairs	Computers	TVs	Telephones	Photocopiers
Baptist	492	31	739	739	12	2	5	2
Catholic	2,968	85	3,582	3,533	80	5	8	7
Government	33,803	1,324	24,865	22,996	157	18	44	48
L.D.S.	259	10	244	244	21	4	2	2
Methodist	398	12	370	370	1	1	3	1
Peace Chapel	236	10	247	270	3	1	1	2
S.D.A.	100	6	70	70	6	0	1	1
School Board/Com	1,520	49	1,604	1,582	77	5	14	10
Total	39,776	1,527	31,721	29,804	357	36	78	73

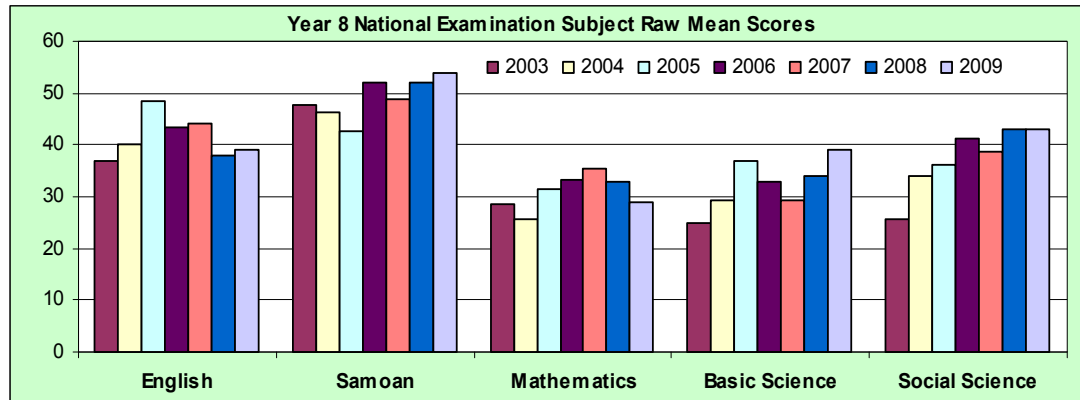
Secondary school facilities by Controlling Authority, 2010

Controlling Authority	Facilities							
	Enrolment	Classrooms	Student Desks	Student Chairs	Computers	TVs	Telephones	Photocopiers
C.C.C.S.	2,449	75	2,666	3,130	43	1	7	6
Catholic	1,511	63	2,018	2,059	126	4	9	7
Government	9,690	299	7,613	7,185	172	27	20	21
L.D.S.	1,201	57	1,240	2,039	210	24	13	6
Methodist	1,281	32	1,060	1,029	38	2	2	2
S.D.A.	527	18	550	560	41	1	4	1
School Board/Com	466	17	540	540	31	1	5	2
Total	17,125	561	15,687	16,542	661	60	60	45

*Part 2 – Data from Sources other than
School Census Information System*

¹Average raw score at National Yr. 8 Examinations
All (Government and Non Government) for Core Subjects

Subject	2003	2004	2005	2006	2007	2008	2009
English	37	40	48	43	44	38	39
Samoan	48	46	43	52	49	52	54
Mathematics	29	26	32	33	35	33	29
Basic Science	25	29	37	33	29	34	39
Social Science	26	34	36	41	39	43	43

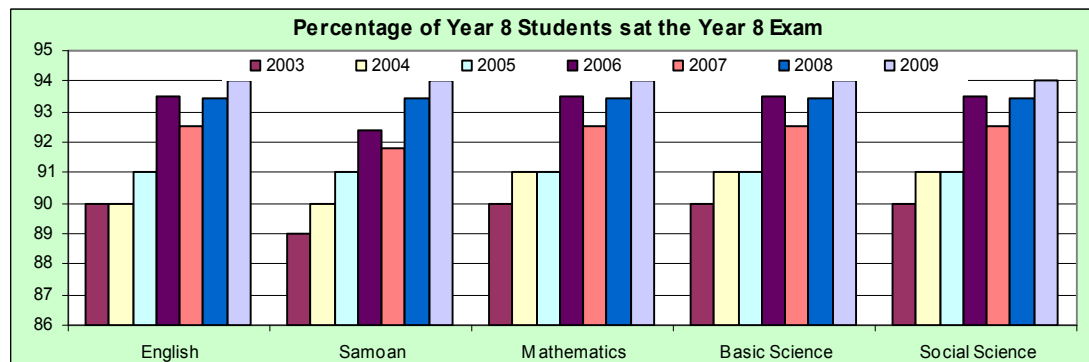


Number of Students sitting Yr. 8 National Examinations

Subject	2003	2004	2005	2006	2007	2008	2009
English	3816	3961	4122	4171	4256	4396	4756
Samoan	3789	3929	4110	4123	4224	4396	4756
Mathematics	3816	3964	4122	4171	4256	4396	4756
Basic Science	3816	3965	4121	4171	4256	4396	4756
Social Science	3816	3966	4121	4171	4256	4396	4756

Percentage of Yr.8 Students² that sat the Yr.8 National Examination
All Students (Government and Non-Government)

Subject	2003	2004	2005	2006	2007	2008	2009
English	90	90	91	93	93	93	94
Samoan	89	90	91	92	92	93	94
Mathematics	90	91	91	93	93	93	94
Basic Science	90	91	91	93	93	93	94
Social Science	90	91	91	93	93	93	94

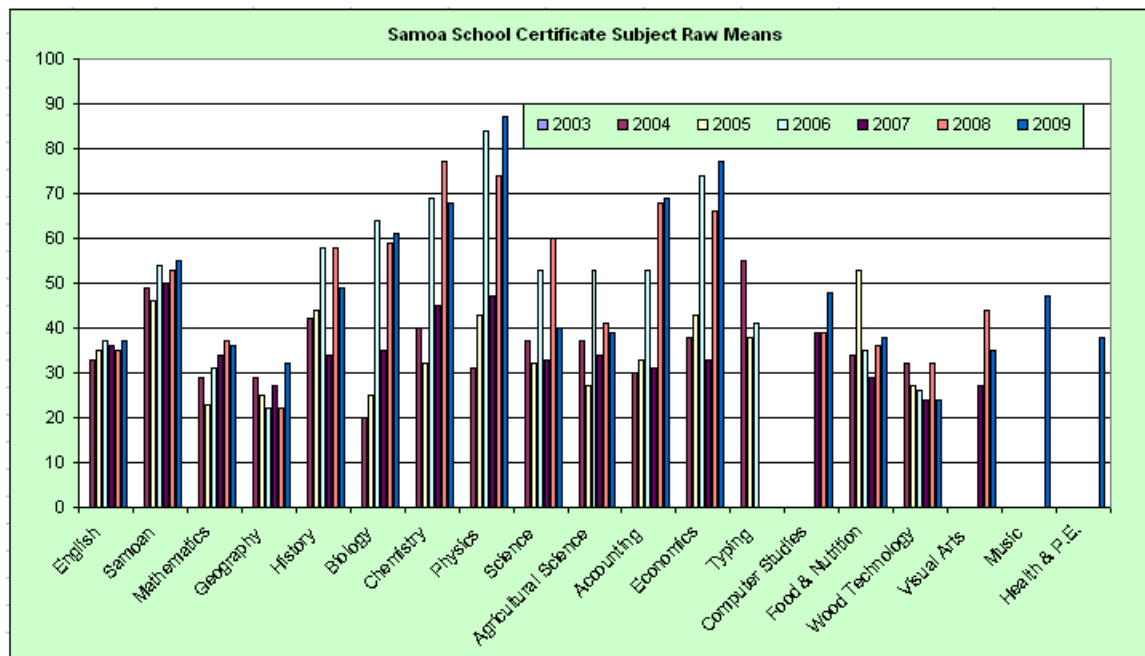


¹ Data at this stage is not available disaggregated by gender, location etc. (This is required to calculate performance measures 1.2, 1.4 of the Performance Framework)

² The percentage of year 8 students sitting year 8 exams is a measure of year 8 completion rate.

**Average Raw Score at National Year 12 Examinations
All (Government and Non Government) for Core Subjects³**

Subjects	2003	2004	2005	2006	2007	2008	2009	Student sitting exam 2009
English	33	35	37	36	35	37	51	2330
Samoan	49	46	54	50	53	55	53	1782
Mathematics	29	23	31	34	37	36	51	2009
Geography	29	25	22	27	22	32	52	825
History	42	44	58	34	58	49	53	575
Biology	20	25	64	35	59	61	57	458
Chemistry	40	32	69	45	77	68	59	331
Physics	31	43	84	47	74	87	61	236
Science	37	32	53	33	60	40		
Agricultural Science	37	27	53	34	41	39	44	68
Accounting	30	33	53	31	68	69	40	539
Economics	38	43	74	33	66	77	57	569
Typing	55	38	41					
Computer Studies				39	39	48	56	691
Food & Nutrition	34	53	35	29	36	38	43	226
Wood Technology	32	27	26	24	32	24	39	197
Visual Arts				27	44	35	37	155
Music						47		
Health & P.E.						38	40	153



**Number of Students⁴ sitting National Year 12 Examination
All (Government and Non Government)**

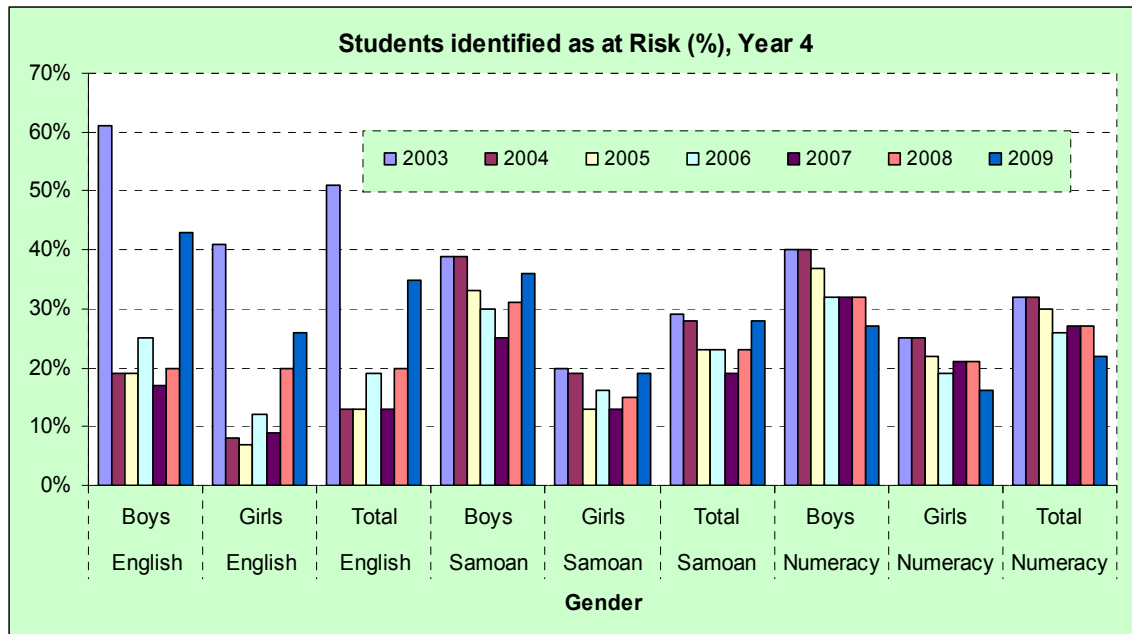
Number of students	2006	2007	2008	2009
Sat National Year 12 Exam	2343	2228	2317	2330
Enrolment in Year 12 (School Census)	2916	2909	2863	2926
Percentage of Year 12 Students that sat the Year 12 Exam	80%	77%	81%	80%

³ Data at this stage is not available disaggregated by gender, location (1.2, 1.4 of the Performance Framework).

⁴ Total number of students who sat any one of the year 12 exams. Note that no subjects are compulsory at year 12, however most students undertake English, Samoan and Mathematics. However, individual schools may have a policy of some subjects being compulsory.

**Primary Students Identified as at Risk⁵, Year 4, All Schools (Government and Non- Government)
Results from SPELL One Test**

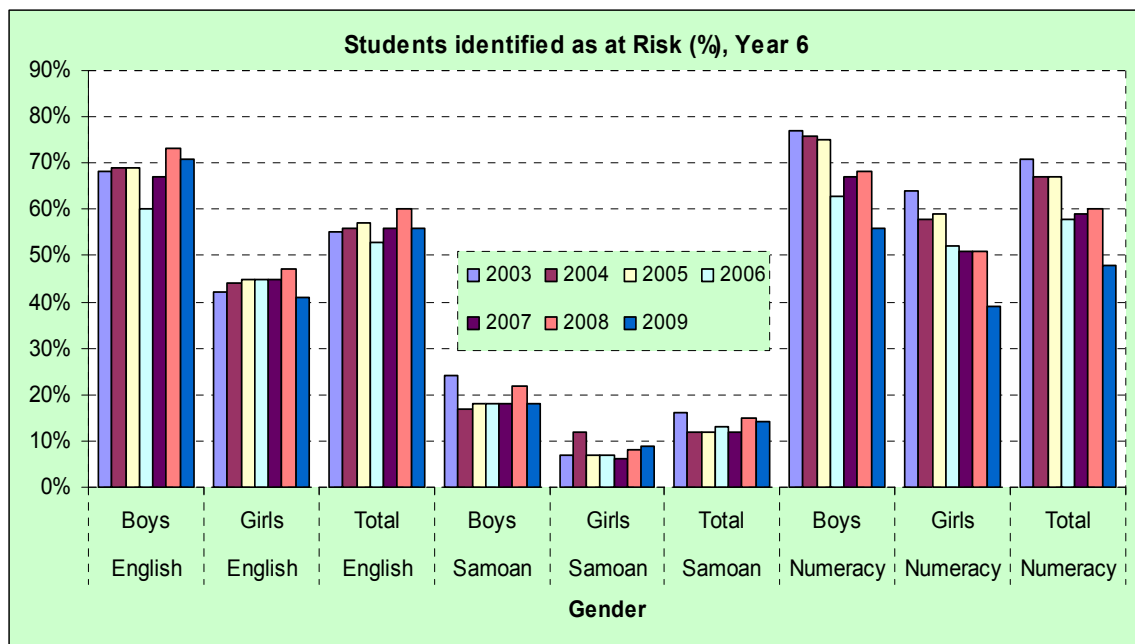
Subjects	Gender	2003	2004	2005	2006	2007	2008	2009
English	Boys	61%	19%	19%	25%	17%	20%	43%
English	Girls	41%	8%	7%	12%	9%	20%	26%
English	Total	51%	13%	13%	19%	13%	20%	35%
Samoan	Boys	39%	39%	33%	30%	25%	31%	36%
Samoan	Girls	20%	19%	13%	16%	13%	15%	19%
Samoan	Total	29%	28%	23%	23%	19%	23%	28%
Numeracy	Boys	40%	40%	37%	32%	32%	32%	27%
Numeracy	Girls	25%	25%	22%	19%	21%	21%	16%
Numeracy	Total	32%	32%	30%	26%	27%	27%	22%



⁵ A test taken by all year 4 students in Government schools. Most non-Government schools also participate, but it is not compulsory. It provides an indication of the students whose learning outcomes are identified as being at risk so that they receive attention from teachers in their reading and numeracy programmes.

Primary Students identified as at Risk⁶, Year 6, Government Schools
Results from SPELL Two Test

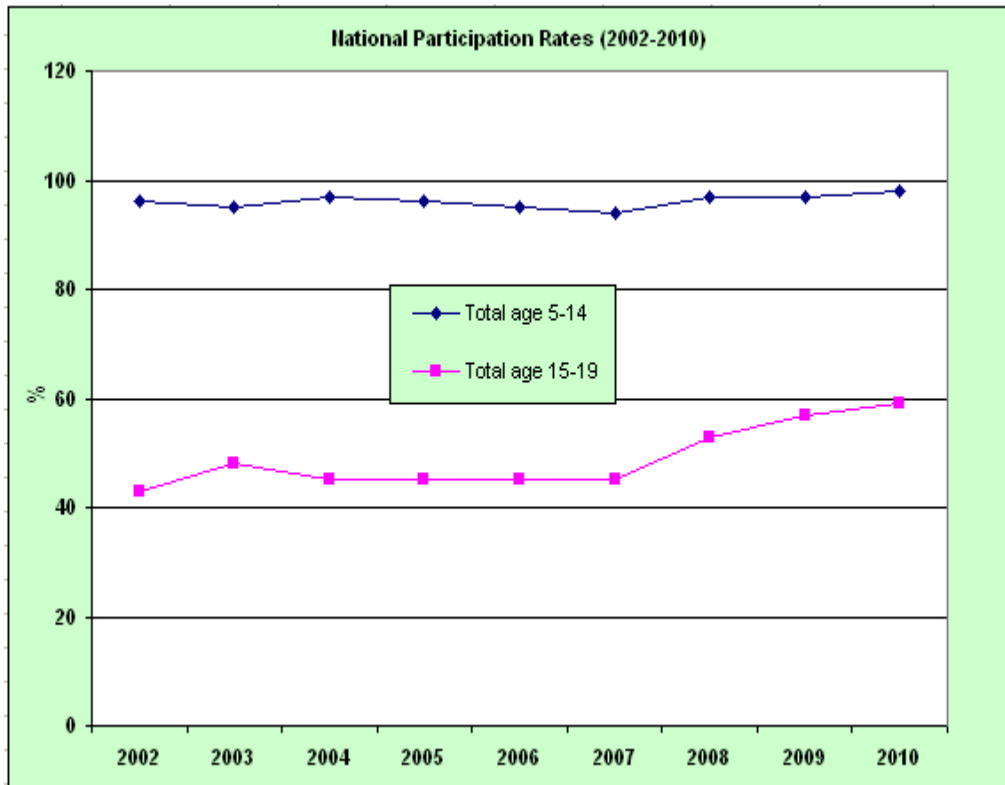
Subjects	Gender	2003	2004	2005	2006	2007	2008	2009
English	Boys	68%	69%	69%	60%	67%	73%	71%
English	Girls	42%	44%	45%	45%	45%	47%	41%
English	Total	55%	56%	57%	53%	56%	60%	56%
Samoan	Boys	24%	17%	18%	18%	18%	22%	18%
Samoan	Girls	7%	12%	7%	7%	6%	8%	9%
Samoan	Total	16%	12%	12%	13%	12%	15%	14%
Numeracy	Boys	77%	76%	75%	63%	67%	68%	56%
Numeracy	Girls	64%	58%	59%	52%	51%	51%	39%
Numeracy	Total	71%	67%	67%	58%	59%	60%	48%



⁶ A test taken by all year 6 students in Government schools. Most non-Government schools also participate, but it is not compulsory. It provides an indication of the students whose learning outcomes are identified as being at risk so that they receive attention from teachers in their reading and numeracy programmes.

National Participation Rate

	2002	2003	2004	2005	2006	2007	2008	2009	2010
Male age 5-14	96	95	97	96	95	94	94	98	97
Female age 5-14	96	95	96	95	95	95	99	96	95
Total age 5-14	96	95	97	96	95	94	97	97	98
Male age 15-19	39	44	42	42	41	42	49	53	52
Female age 15-19	46	53	49	49	48	49	57	61	66
Total age 15-19	43	48	45	45	45	45	53	57	59



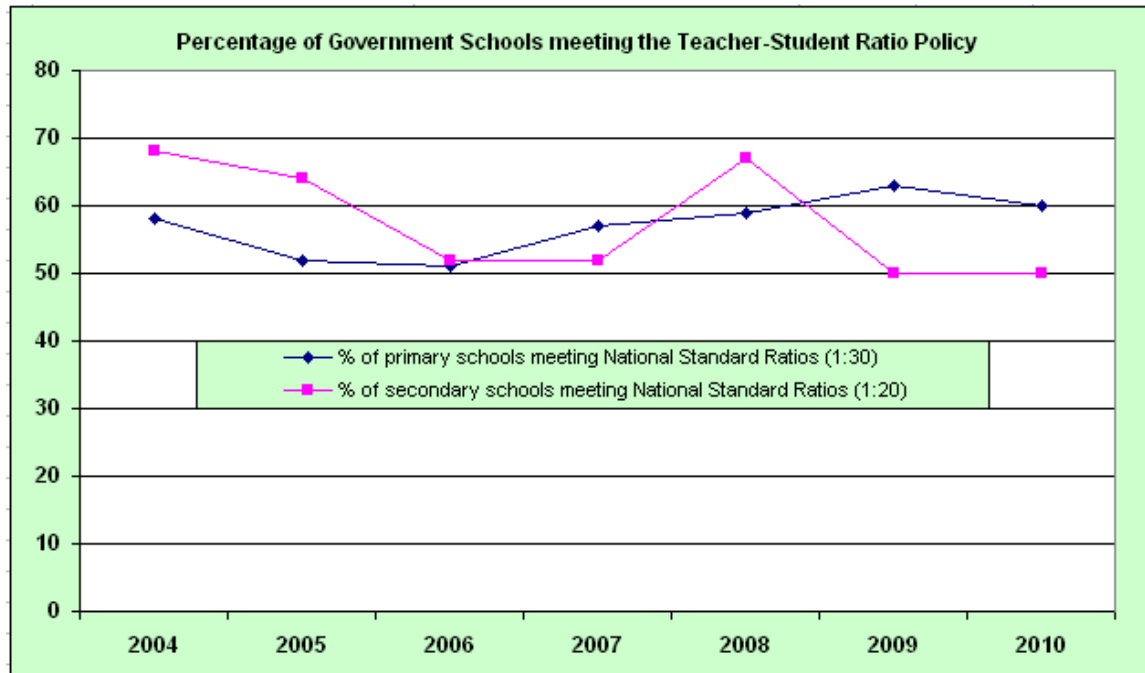
Source: Population estimates were provided by the Statistical Services Division of the Ministry of Finance and UNESCO

Number of Government Schools that are meeting the National Standards for Primary Students – Teacher Ratio of 1 Teacher to 30 Students (1:30)

Year	No. of primary schools meeting National Standard Ratios (1:30)	No. of primary schools above National Standard Ratios (1:30)	% of primary schools meeting National Standard Ratios (1:30)
2004	82	59	58
2005	73	68	52
2006	72	69	51
2007	80	61	57
2008	83	57	59
2009	88	52	63
2010	85	57	60

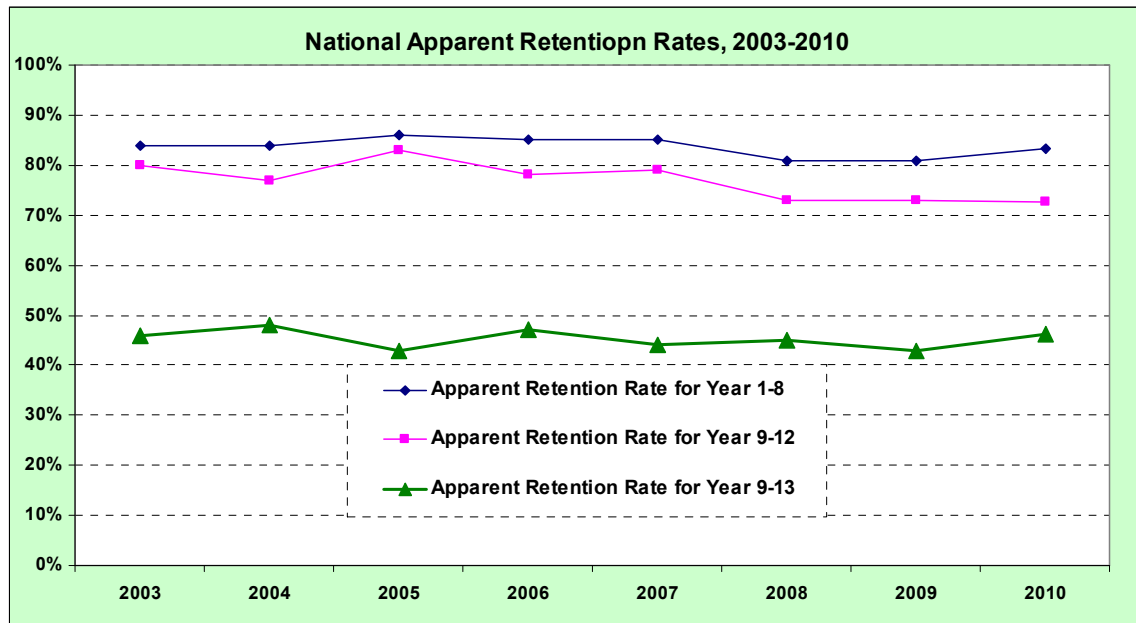
Number of Government Schools that are meeting the National Standards for Secondary Students – Teacher Ratio of 1 Teacher to 20 Students (1:20)

Year	No. of secondary schools meeting National Standard Ratios (1:20)	No. of secondary schools above National Standard Ratios (1:20)	% of secondary schools meeting National Standard Ratios (1:20)
2004	17	8	68
2005	16	9	64
2006	13	12	52
2007	13	12	52
2008	16	8	67
2009	12	12	50
2010	12	12	50



Apparent retention rate⁷ for All Schools

Year Level	2003	2004	2005	2006	2007	2008	2009	2010
Apparent Retention Rate for Year 1-8	84%	84%	86%	85%	85%	81%	81%	83%
Apparent Retention Rate for Year 9-12	80%	77%	83%	78%	79%	73%	73%	73%
Apparent Retention Rate for Year 9-13	46%	48%	43%	47%	44%	45%	43%	46%



Students commencing First Year of Tertiary Studies⁸

Year	Institute of Higher Education (IHE)	Institute of Technology (IOT)	University of the South Pacific (USP)	Total
2005	444	381	Not Available	825
2006	557	353	Not Available	910
2007	529	384	Not Available	913
2008	456	438	Not Available	894
2009	442	308	Not Available	750
2010	701	476	Not Available	1177

Transition Rate⁹ from Year 13 to identified Tertiary Education

Year	Enrolment in Year 13	Total Tertiary Enrolment	Transition Rate from Year 13 to Tertiary
2004	1752	793	49
2005	1584	825	47
2006	1756	910	57
2007	1652	913	52
2008	1657	894	54
2009	1669	750	45
2010	1853	1177	64

⁷ Apparent Retention Rate compares the number of students in a given year with the size of the cohort some years ago. For example, the apparent retention rate of Year 9-12 for 2010 is calculated as the number of students in year 12 in 2010 divided by the number of students who were in Year 9 in 2007.

⁸ Students commencing at USP are not included.

⁹ Transition rate into Post School Education is the number of students who commenced post-school education in 2010 (Institute of Higher Education, Institute of Technology) as a percentage of the students who were in Year 13 in 2009. Students commencing at USP are not included.



